



# **CAMRA ANGLE**

## **ISSUE 74 - SPRING 2026**

### **IN THIS ISSUE**

**Pub & Club of  
the Year**



**Maxim on the  
move  
Plus much  
much more !!**



**FREE - PLEASE TAKE ONE**

# THE STEAMBOAT



**A Friendly Welcome Guaranteed!**

**CAMRA 50TH ANNIVERSARY**

**GOLD AWARD 2021**

**CAMRA'S Sunderland & South Tyneside**

**Pub of the Year 2008, 2009, 2010, 2011, 2015,  
2016, 2017, 2018 Runner Up 2022, 2023, 2024**

**Community Pub 2022**

**Regional Pub of the Year 2015 & 2016 Society  
for the Preservation of Beers from the Wood**

**North East Pub of the Year 2023**

**Nine ever changing Cask Ales and Ciders**

**30 Whiskies, 120 Rums & 30 Gins**

**27 Mill Dam South Shields**

**NE33 1EQ Tel: 0191 4540134**



## Welcome to this edition of CAMRA ANGLE

This issue features the usual round up of local pub, club and brewery news. There are several excellent feature articles for you to enjoy. The cover features two important items of news

- The results of our Pub, Club and Cider Pubs of the Year 2026.
- Maxim Brewery's move to Castle Eden,

CAMRA Angle is put together by volunteers and is not subsidised. It relies solely on advertising to cover our printing costs. Please show your support for our advertisers, without whom there would be no magazine.

So if you run a pub, club, brewery or a beer festival - or even any other business - please consider helping us to promote real ale, cider, local pubs and clubs ; and keep this magazine going by advertising with us. Details are shown below.

**Ken Paul - Magazine Editor**

### ADVERTISING IN CAMRA ANGLE

Our competitive rates are :-

£100 per full page,

£55 for a half page

£35 for a quarter page.

Discounts are available for taking out consecutive prepaid issues over a year.

A free design service is available. Please contact  
[ads01@sst.camra.org.uk](mailto:ads01@sst.camra.org.uk)

**Contributors :-** Fiona Monteith Preston, Ken Paul, Julio Romero Johnson, Mark Taylor, Michael Wynne. All photographs are by our branch members unless stated.

**CONTRIBUTIONS** are welcome and can be sent to [magazine01@sst.camra.org.uk](mailto:magazine01@sst.camra.org.uk)

The Branch would like to thank The Stags Head, South Shields for hosting our last branch meeting ( see also Page 24)

Branch Contacts can be found on the next page

**WE HAVE SOME BRANCH VACANCIES; SHOULD YOU BE INTERESTED PLEASE EMAIL [contact@sst.camra.org.uk](mailto:contact@sst.camra.org.uk)**

A complete collection of CAMRA ANGLES and CAMRA ANGLE ONLINE, going back to 2002 ,is available to download from <https://sst-arch.camra.org.uk/magazine>

**CAMRA ANGLE** is produced in house and published by the Sunderland & South Tyneside Branch of the Campaign for Real Ale, (CAMRA), an independent, voluntary organisation, campaigning for real ale and cider, heritage and community pubs, clubs and consumer rights. Views or comments expressed in this publication may not be necessarily those of the Editor, contributors or CAMRA.

All content © 2026 Sunderland & South Tyneside CAMRA, unless where stated. Copies are distributed across the branch and beyond.

Printed by Pblprint of Drum Industrial Estate, Chester le Street

Branch Contact Information		
<b>General Contact</b>		<a href="mailto:contact@sst.camra.org.uk">contact@sst.camra.org.uk</a>
<b>Chairman</b>	Alan Harrison	<a href="mailto:chair@sst.camra.org.uk">chair@sst.camra.org.uk</a>
<b>Secretary</b>	Lynn Dobson	<a href="mailto:secretary@sst.camra.org.uk">secretary@sst.camra.org.uk</a>
<b>Treasurer</b>	Steve Drummond	<a href="mailto:treasurer@sst.camra.org.uk">treasurer@sst.camra.org.uk</a>
<b>Membership</b>	<b>VACANT</b>	<a href="mailto:members@sst.camra.org.uk">members@sst.camra.org.uk</a>
<b>Magazine Editor</b>	Ken Paul	<a href="mailto:magazine01@sst.camra.org.uk">magazine01@sst.camra.org.uk</a>
<b>Advertising</b>	<b>VACANT</b>	<a href="mailto:ad01@sst.camra.org.uk">ad01@sst.camra.org.uk</a>
<b>Webmaster</b>	Ian Monteith-Preston	<a href="mailto:webmin@sst.camra.org.uk">webmin@sst.camra.org.uk</a>
<b>Social Media</b>	Stan Johnson	<a href="mailto:Socialmedia@sst.camra.org.uk">Socialmedia@sst.camra.org.uk</a>
<b>Public Affairs</b>	Michael Wynne	<a href="mailto:publicaffairs@sst.camra.org.uk">publicaffairs@sst.camra.org.uk</a>
<b>Pubs</b>	Ken Paul/Phil Hughes	<a href="mailto:pubsofficer@sst.camra.org.uk">pubsofficer@sst.camra.org.uk</a>
<b>Clubs</b>	Sid Dobson	<a href="mailto:clubs@sst.camra.org.uk">clubs@sst.camra.org.uk</a>
<b>Pubs Protection</b>	<b>VACANT</b>	<a href="mailto:ppo@sst.camra.org.uk">ppo@sst.camra.org.uk</a>
<b>Cider Rep.</b>	Steve Clough	<a href="mailto:cider@sst.camra.org.uk">cider@sst.camra.org.uk</a>
<b>Social Secretary</b>	<b>VACANT</b>	<a href="mailto:social@sst.camra.org.uk">social@sst.camra.org.uk</a>

<b>Branch Heritage Pubs</b>	<a href="mailto:admin.team@heritagepubs.sst.camra.org.uk">admin.team@heritagepubs.sst.camra.org.uk</a>
<b>Website</b>	<a href="https://heritagepubs.sst.camra.org.uk/">https://heritagepubs.sst.camra.org.uk/</a> -

BRANCH SOCIAL MEDIA DETAILS	PRESS & MEDIA CONTACTS
<p><b>Twitter:</b> @SST_CAMRA</p> <p><b>Facebook:</b>  <a href="https://www.facebook.com/SSTCAMRA">https://www.facebook.com/SSTCAMRA</a></p> <p><b>Facebook:</b>  <a href="https://www.facebook.com/groups/SSTCAMRA/">https://www.facebook.com/groups/SSTCAMRA/</a> (Discussion Group)</p> <p><b>Instagram:</b>  <a href="https://instagram.com/sst_camra">https://instagram.com/sst_camra</a></p>	<p>Michael Wynne, Ian Monteith-Preston, Stan Johnson, Ken Paul.  <a href="mailto:press@sst.camra.org.uk">press@sst.camra.org.uk</a></p> <p>For more details see  <a href="https://sst.camra.org.uk/wordpress/?page_id=32">https://sst.camra.org.uk/wordpress/?page_id=32</a></p>

## CAMRA'S HQ HAS MOVED

9 Finway,  
Dallow Road,  
Luton,  
LU1 1TR  
9am -5pm Monday to Friday

Tel :- 0330 1539924

Email address: [camra@camra.org.uk](mailto:camra@camra.org.uk).



## IN THIS ISSUE

Pub & Brewery News	7	Membership	16
Maxim Last Open Night	10	Our Yorkshire Pub Rescue	18
Eddie, Jack & Regal	11	Pub Heritage	19
Other News	12	Stormy Weekend in Leeds	21
Pub of the Year	14	Pub Quiz	24
Club Page	15	Helmsley Hop	25

## DIARY DATES

### March 2025

Darlington CAMRA Beer Festival	March 20 <sup>th</sup> - 2 <sup>nd</sup> See back cover for details
--------------------------------	---

### April 2025

Courtyard Beer Festival	3- 7 April 2026. Biddick Lane, Washington, NE38 8AB
Newcastle Beer & Cider Festival	15-18 April 2026 See page 13 for details
CAMRA AGM and Members Weekend	17 - 19 April 2026 The Alban Arena - Civic Close, St Albans AL1 3LD <a href="https://camra.org.uk/members-weekend">https://camra.org.uk/members-weekend</a>

### May 2025

Branch Meeting	Date and venue TBA
----------------	--------------------

Look out for announcements on social media or our online **FUTURE EVENTS** page [https://sst.camra.org.uk/wordpress/?page\\_id=42](https://sst.camra.org.uk/wordpress/?page_id=42)

The North East CAMRA Region holds **Regional Meetings** every three months, shared by the five branches. Darlington branch hosted the February meeting so the rest of the year is as follows :-

- **Tyneside & Northumberland** - May 2026
- **Cleveland** - August 2026
- **Sunderland & Sth Tyneside** - November 2026
- **Durham** branch will host the first meeting of 2027

Date and venue of the May meeting will be made known nearer the time. All start at 1pm and all members are welcome.

**Subject to CAMRA ratification, The North East Region has a new Regional Director ( RD) ; Ian Monteith Preston.** He takes over from **Hubert Gieschen** , who now has a new role as Tyneside & Northumberland Cider Coordinator. So well done to Hubert for ably carrying out the role, and good luck to Ian for his forthcoming term of office.



**SERVING**  
**TRADITIONAL PUB FOOD**

**MONDAY - SATURDAY 12 NOON - 8.00PM • SUNDAY 12 NOON - 4PM**

**LOCAL CASK ALES**  
**LAGERS & CIDERS**

**VAST SPIRIT SELECTION**  
**PUB QUIZ EVERY TUESDAY 7.30PM**

**FUNCTION ROOM AVAILABLE • DOG FRIENDLY**  
**POOL TABLE • DARTS • PUB GAMES**  
**5 MINUTES WALK FROM THE BEACH**



**THE MARINE**  
**230 OCEAN ROAD, SOUTH SHIELDS**  
**TYNE & WEAR, NE33 2JQ**  
**0191 455 0280**  
**CIVILIZEDPOISON@GMAIL.COM**  
**f THE MARINE x THEMARINE33**  
**∞ THE MARINE**



*North Sea*

**OPENING HOURS**  
**MONDAY - THURSDAY 11AM-11PM • FRIDAY - SATURDAY 11AM-MIDNIGHT**  
**SUNDAY 12 NOON-10.30PM**

# Pub & Brewery News

## South Shields

**The Vigilant (The Vig)** has a new licensee ; Sinia Jazwi, formerly of The New Cyprus and The Chichester Arms, By the time you read this **The New Cyprus** will have reopened

Again, by the time you read this **The Trimmers** will have reopened. No confirmation yet about any real ale being available in the above three highlighted pubs

## Sunderland

After a long wait, the former shelter on Roker Beach has been transformed by Vaux Brewery into a pleasant cafe bar. Called **Elephant Rock** after the nearby cliff feature, the photo below was taken in the summer of 2022 before work started.



There are up to 15 keg taps but no real ale. Opening at



*The week it opened...note the sandbags - thanks to Mark Taylor*

9 am, this seems to be mainly a beach cafe as alcohol not available till 11am.

On the day of my visit, early February, the large picture windows, which look like they slide open, was protected by sandbags. There was evidence there had been a high surf as lots of sand was washed up close to the pub.

## Washington

**The Biddick Inn** closed before Xmas. There was a sign outside saying that Stonegate are looking for a new tenant. The sign had gone by mid February but this former real ale pub, dating from 1827 was still in darkness and advertised on the Stonegate website

**The Ox and Plough** in Oxclose village closed suddenly in February, citing high rental costs.

**The Wheelhouse** in Albany Village has been put up for sale by owners Camerons. Built in 1973 as part of the Washington New Town development, it initially was a Vaux Breweries Pub. The pub was still open however last month.

## West Boldon

Last month we reported that **The Wheatsheaf** had

introduced real ale. Sadly, this has now been discontinued and the handpulls removed.

## West Herrington

The licensees of **The Stackyard** (it's near The Stables) have announced they are leaving the pub, and have given pubco Stonegate 12 months notice.



## Regional News

It has been announced that the owner of **The Rat Race** is retiring and the pub will close on March 21<sup>st</sup>. Cleveland CAMRA held a final visit on March 18<sup>th</sup>. It is often claimed that this is the second micropub in UK, after The Butchers Arms in Herne, Kent. What is often overlooked is The Nutshell in Bury St Edmunds; which is in the Guinness Book of records as UK's smallest pub.

Note This pub news section cannot mention every real ale pub in every issue, so please use the feedback described on page 16.

## **Sunderland & Sth Tyneside Brewery Directory** (Inc Branch Brewery Liaison Officers ( BLO's))

### **Brewlab**

1 West Quay Court, Sunderland Ent. Pk. Sunderland, SR5 2TE <https://brewlab.co.uk/>  
BLO :- Michael Wynne :- [brewlabBLO@sst.camra.org.uk](mailto:brewlabBLO@sst.camra.org.uk)

### **Maxim**

1 Gladwell Road, Houghton le Spring, DH4 5NL <http://www.maximbrewery.co.uk/>  
BLO - Ken Paul - [maximBLO@sst.camra.org.uk](mailto:maximBLO@sst.camra.org.uk)

### **North Pier**

Harbour View North, Roker, Sunderland, SR6 0PQ <https://northpierbrew.co.uk/>  
BLO - Stan Johnson [northpierBLO@sst.camra.org.uk](mailto:northpierBLO@sst.camra.org.uk)

### **Vaux**

4 Charles Street, North, Sunderland, SR6 0AN <https://www.vaux.beer/>  
BLO - Mo Moseley - [vauxBLO@sst.camra.org.uk](mailto:vauxBLO@sst.camra.org.uk)

### **Wear Beer**

26 Silksworth Row, Sunderland, SR1 3QJ [Wearbeer.co.uk](http://Wearbeer.co.uk)  
BLO- Ken Paul - [wearbeerBLO@sst.camra.org.uk](mailto:wearbeerBLO@sst.camra.org.uk)

**Brewlab** - There is a change to Brewlab's public events this year. The programme of events up to 21 August 2026 has been announced. There will be two Friday events each month and a number of Saturday openings linked to brewing experience days or beer and cheese pairing events.

The complete programme of events can be found at <https://brewlab.co.uk/about-us/brewlab-brewn/brewlab-brewn-taproom/>

You can book a spot on the beer and cheese pairing events at

<https://brewlab.co.uk/product/beer-tasting-and-cheese-pairing-experience>

See article about **Beer and Cheese Pairing** in last issue of CAMRA Angle ; page 12. <https://sst.arch.camra.org.uk/dl.php?id=268469>

**Maxim Brewery.**- Because of their move to Castle Eden Brewery in 2026, January 6<sup>th</sup> was their last bar night. **See more on this on next page.** Their new beer Strata, featured. Named after an Indie Hops developed variety called Strata. Its is a pale ale with aromas of passion fruit, melon, strawberry, grapefruit and dried chilli peppers. Also doing the rounds in February were Raspberry Porter, Double Maxim, John Bull Stout and Nectaron.

**North Pier** report that their **Infinite**, a 4% American pale ale brewed with Centennial and Citra hops, is now available. Also spotted in a few locals has been **El Dorado**, a 5% IPA brewed with El Dorado hops.

**Wear Beer** The new website has information on the brewery and an online shop; bottles are available for local and national delivery and collection. Brew day experiences to make your own beer and learn about brewing will be available in March.

There is a return to the regular Sunnside and Hebburn Markets and there are a few events in the first half of the year such as the Sunderland Food Fest.

Also being brewed is the third edition of Three Rivers, a yearly collab with Darwin and Alnwick Brewery. There is a special collab too with The Kings Arms down in Deptford, both should be out around March. Finally, there are plans to launch a Lager in keg as an addition to the core range, the first batch coming out soon.

# Maxim Brewery - The Last Bar Night

The evening of Friday 6<sup>th</sup> February 2026 marked the end of an era; it was the last open bar night at Maxim Brewery. The photos in this article are from the last night unless indicated.



bars and some of their regular beers featured (always Double Maxim), plus some seasonal beers and often a new brew.

On the last night we enjoyed **Double Maxim, John Bull Stout, Raspberry Porter, Swedish Blond, Idaho 7,**



As reported in the local press at the time, the business was acquired by the Gosport based Powder Monkey Group in December last year .

Over the coming months the business and its brands will be transferred to Castle

**Nectaron and Strata** (new). The last three are named after the hops used in the brew.

As well as beer there was usually a food truck and always some free books, DVD's and vinyl albums. One night there was even a lawn scarifier (Google it) ....this is now in my garage.

Top right is **Dray & Horses**, brewed to celebrate 20 years of the brewery. This made an appearance in August 2019. ( See opposite page)

Early 2020 saw the debut of Sour Cherry Chocolate Stout.



**A 2022 branch bus trip - are you on here?**

Finally, recognition must go to the hard working brewery staff; before, during and after the bar nights. We were always made to feel welcome. I for one will miss these events; catching up with old friends and meeting new ones.

**Ken Paul, Maxim Brewery Liaison Officer (Since mid 2019)**



Eden Brewery in Seaham. The bar nights started as a trial in 2018 and quickly developed into a very popular, first Friday of the month event. There are two

# Eddie, Jack and Regal

## A Drayman's Story by Eddie Mahoney and Ken Paul

If you have ever been near Keel Square in Sunderland City Centre you can't fail to have noticed an impressive metal sculpture depicting a dray and horses. Called **Gan Canny**, this was unveiled in December 2021.

It depicts two horses and two figures. One figure is standing, the other seated. The latter is actually modelled on Eddie Mahoney, a former drayman at Vaux Brewery, which used to be opposite the sculpture. The brewery



**Eddie posing just after Gan Canny put in place**

closed in 1999. This then is his story.

**His first job was working** with horses at Wheldon's farm near the Board Inn, Herrington. He joined Vaux in 1964, again with horses, first on a 6 week trial, and then full time till the brewery closed in 1999.

The horses, Jack and Regal are a French breed called Percherons. At 18



**Used as the Maxim Dray & Horses pump clip in 2019**

hands three inches tall from their withers; i.e., the ridge between the shoulder blade to the floor. (that's 75 inches)

Bear in mind going up hill with a full load was considerably slower than and empty load going downhill. Eddie recalled a lengthy run to **The Havelock** next to the river in Washington ( then Fatfield). This involved a journey along Chester Road to **The Prospect** in Penshaw for a delivery, leaving the empties till the way back. Down to the Wear for a lunch break next to river outside the Havelock. Then back to The Prospect to collect



**Five ton weight horse tanker**

empties then return to the brewery.

This would be a full day out. Another long route was to **The Marsden Grotto**. Those familiar with this unique pub will recall that it is either reached by steps down the cliff, or in a lift. To get the

beer down to the cellar they used a different method entirely, via a long tube from near the lift doors to the cellar tanks. A horse tanker would be used for deliveries like this, weighing five tons when full.

Assuming a delivery of Samson, Lorimer's Scotch and Norseman Lager a pipe would be connected, to the Samson first, the other end to tube near the lift. An intercom was used to communicate to the bottom, then the beer was dispatched down to the appropriate tank. Switching to the second beer, the process was repeated. So you then had Scotch with traces of Samson. Finally, the lager. This would then have traces of Scotch in it

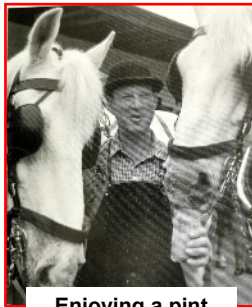
Long runs like this were later scrapped, restricting the horse and dray deliveries to a three mile radius from the town centre.

The brewery would see many visitors. Comedian Tom O Conner was one, also Ken Dodd and his Diddymen. The latter

were late, keeping them waiting for over an hour and a half. What was more memorable was a visit by some residents from



Nookside Care Home in Grindon Sunderland. While Eddie can be seen posing (above) with Jack and Regal, what had happened just before was Regal grabbed the right foot of the chap on the right. Despite remonstrating with the horse, he continued to enjoy the slippers. The chap was absolutely



Enjoying a pint

delighted; it made his visit. In his spare time Eddie would officiate at the Durham County Show on Lord Lambton's Estate and participate in several ploughing competitions. He left the brewery when it closed in 1999 but that is not the end.

After a chance meeting with Peter Heslop of **Vaux Brewery Collectables**, Peter suggested to metal worker Ray Lonsdale the idea of making a Dray & Horses sculpture, Sunderland City Council came on board and Eddie was taken on as a consultant. He suggested several improvements to the original design and he also became the model for the driver.

One such day at Ray's workshop in South Hetton involved getting the



length of the metal reins correct. These are always held in the left hand, but with no horses built at that time, they had to compromise by using a pair of stepladders to emulate the height of the horses. Eddie sat on the dray and the reins were stretched to the steps ladders. He remembers this was the one and only time he had driven a pair of stepladders! Later, when the horses were finished someone recalls Eddie subconsciously stroking one of them.

Although out in all weathers, it was a fantastic

job at the brewery. He enjoyed working with such wonderful animals.

Despite it being forbidden, he would never say no to a couple of complimentary pints at a pub and he considered it a perk chatting up the barmaids; (and get paid for it).

Jack and Regal retired in 1993; his wife Jacqueline bought them for him for his 50<sup>th</sup> birthday and they were in his care near his home in Tunstall, south of the city centre, till they were sadly put down.

Eddie has a large collection of photographs of his time at the brewery, which he proudly had on display when I met him in February. It got me thinking how many people keep a photographic record of their time at work? I haven't!.

Thanks to Eddie and Peter for their time and photographs. It has been a pleasure working on this piece. For further reading there is an article in CAMRA's online newspaper :-

<https://wb.camra.org.uk/2021/12/17/lifesize-brewery-dray-horses-revealed>



Eddie & Ken, meeting for the first time, at a Maxim open night, June 2022.

## More News

### Champion Winter Beer of Britain.

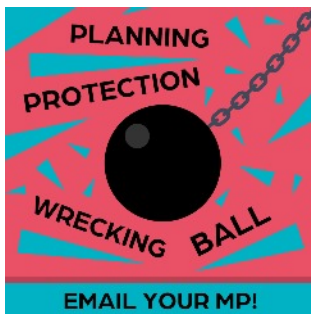
The judging for this usually takes place at the Great British Beer Festival Winter. With there being no event this year, the judging took place at the Liverpool Beer Festival. The winners are :-

- Gold London Brewing Beer Street
- Silver Cairngorm Black Gold ( last year's champion)
- Bronze Green Jack's Baltic Trader Export Stout

Overall there were six categories , the full list can be found in this press release.

<https://camra.org.uk/media-centre/press-releases/beer-street-crowned-camras-champion-winter-beer-of-britain-93817>

No North East Regional brewer featured this year.



**A new MP e-lobby** has been launched to ask the Government to think again and stop planning protections laws in England being watered down. To retain protections in the planning system for pubs . Click on the link below to take part and email your MP :-

<https://camra.org.uk/campaigns/say-no-to-planning-changes-that-will-threaten-pubs-11>

**CAMRA's Whatpub database is no more.** However the data is still available for all to use, not just CAMRA members, on the main CAMRA website. Go to <https://camra.org.uk/locations/branches/sunderland-south-tyneside-sun-9> which focuses on pubs, clubs and breweries in our branch area, or <https://camra.org.uk/> for the full website.

All the information has been compiled by CAMRA members and no fee has been charged. There are opening times, descriptions, beer and cider on offer, facilities and maps. You can search for individual venue or a general location. Readers are encouraged to suggest an edit changes in beers, opening times and facilities for example. (NOT customer reviews please) . This can be done using the feedback **Suggest An Edit** button on each entry.



# 48<sup>th</sup> Newcastle Beer & Cider Festival

15–18<sup>th</sup> April 2026

Northumbria  
Students Union

All Welcome!



Scan or visit for more info



[www.nclbeerfest.uk](http://www.nclbeerfest.uk)



# And The Winners Are

## Sunderland & South Tyneside CAMRA Branch Pub and Club of the Year 2026

Voting and judging by branch members has taken place for the pub, club and cider pub of the year. The winners of each category now go forward to the regional judging round later in 2026. Presentations for the winners will be announced in due course.

### Pub of the Year

- |  |
|--|
| 1 <sup>st</sup> Blues Micropub, Whitburn |
| 2 <sup>nd</sup> Dun Cow, Sunderland      |
| 3 <sup>rd</sup> Steps, Washington        |

The other three finalists were The Marine (2024 winner), The Ship Isis (2025 winner) and The Stags Head

### Club of the Year

- |  |
|--|
| 1 <sup>st</sup> Boldon Cricket Club              |
| 2 <sup>nd</sup> Ryhope Catholic Club             |
| 3 <sup>rd</sup> Mid Boldon Club<br>(2025 winner) |

The other finalist was The Iona Club

### Cider Pub of the Year



*Blues Micro Pub by  
Peter Tong*

- |   |
|---|
| 1 <sup>st</sup> Blue's Micro Pub, Whitburn<br>(2025 winner) |
| 2 <sup>nd</sup> The Avenue, Sunderland                      |



*Boldon Cricket Club by Sid  
Dobson*

## THE 2025 NATIONAL PUB WINNER

The 2025 CAMRA Pub of the Year is The Tamworth Tap in Staffordshire. This is the third time it has won this prestigious award, unprecedented since the first competition in 1988.

<https://camra.org.uk/media-centre/press-releases/tamworth-tap-takes-uks-best-pub-title-for-record-breaking-third-time-93809>

The 2025 CAMRA Club of the Year ; see opposite page

# Club News



Unless you have been out of the country lately you won't have failed to notice the North East Region of CAMRA has a National winner, in the form of the **Club of the Year Award 2025**. This accolade has gone to **Billingham Catholic Club**.

This is only the second time in CAMRA's history that a national winner has come from the North East. The first, in 1994, was **The Beamish Mary** in No Place near Stanley, Co. Durham.

There were four finalists, the other three being :-

- Appleton Thorn Village Hall, Cheshire,
- Orpington Liberal Club London
- Cheltenham Motor Club, Gloucestershire.

All of the above are former winners ( either Gold, Silver or Bronze) so the Catholic Club is now in good company.



A presentation took place on Saturday 31<sup>st</sup> January (see photo top right). Visitors were made very welcome, with a red carpet and CAMRA festooned balloons. The TV cameras were there to record the proceedings.



**In our branch there are 67 clubs of various types ; mostly working men's social clubs. These reflect the history of our area. The one that stands out the most has to be **The Newbottle Working Men's Club & Institute.** (Above) Dating from the early eighteenth century, it**



***Club of the Year Presentation: From left to right:- Tony Hill (Cellarman) ; Sean Rowbottom (Bar Manager) ; Shelly Bentley (CAMRA Awards) and Phil Gregg (National Clubs Coordinator).***

has a smart imposing three storey red brick frontage in Newbottle Village. It is Grade II listed and more information about the building can be found on the Historic England website :-

<https://historicengland.org.uk/listing/the-list/list-entry/1025409>

Of the 67, four serve real ale (unless you know different). They are:-

- Boldon Cricket Club
- Iona Club Hebburn
- Mid Boldon Club
- Ryhope Catholic Club

From December 2025 to mid February some branch members were out and about judging these clubs. The results are on the previous page.

***Presentation photos by Steve Clough***

# CAMRA MEMBERSHIP

<https://camra.org.uk/membership>

The number of members in the Sunderland & South Tyneside branch at the end of 2025 stands at 550.

We are always keen to encourage people to join the **Campaign for Real Ale**. You would enjoy our range of activities and benefits and campaigns. So if you enjoy pubs and good company, why not join up? You will be most welcome.

You can do this by visiting the CAMRA website shown above, or by filling in a form you may have discovered in one of our leaflet holders.

Annual membership rates are :-  
£34 single membership,  
£42 for joint membership  
More details can be found using the link above.

Paying by Direct Debit gives you a £2 discount and, once set up, will automatically renew so you don't have to.

You can also buy a single year's membership by card payment, which won't automatically renew

## So what does your membership include?

You will receive a membership welcome pack in the post. Included will be £30 worth of 50p vouchers and a membership card.

So what are the benefits ?



- Regular online What's Brewing updates and a quarterly BEER magazine.
- Learning resources to discover more about beer and cider <https://learn.camra.org.uk/home>
- Discounts on CAMRA books including the annual Good Beer Guide.
- Exclusive discounts from retailers and other outlets.
- **Free entry to full CAMRA run Beer Festivals with your membership card.**
- £30 worth of Real Ale, Cider or Perry Vouchers to use in pubs such as JD Wetherspoon, Stonegate, Amber Taverns and more.
- A Real Ale Discount Scheme where you can, on production of your membership card, receive discounts on pints. You can find participating pubs in this branch by following the link below [https://sst.camra.org.uk/wordpress/?page\\_id=2209](https://sst.camra.org.uk/wordpress/?page_id=2209)



**Locale** promotes venues stocking locally brewed ale in order to reduce the number of beer miles from brewery to cellar. Look out for the LocAle logo under features when searching for pubs on the CAMRA website.

# THE STEPS

Real Ale, Real Pub, Real People.



UP TO 4 CHANGING REAL ALES  
★ **SUNDERLAND & STH** ★  
**TYNESIDE PUB OF THE YEAR  
2026 - SECOND RUNNER UP.  
20 YEARS IN THE GOOD BEER  
GUIDE**

QUIZ NIGHT:- TUESDAY  
8.30 PM WITH FREE HOT SUPPER.  
DOMINOES HANDICAP  
2.30 PM EVERY SUNDAY.  
ALL SPORTS SHOWN  
Functions catered for.  
47 Spout Lane, Washington NE38 7HP  
0191 4150733. 2 Minutes walk from  
Washington Village Green

Opening Hours : Mon-Thu 3pm-11pm, Fri 2pm - 11pm, Sat  
Noon-11pm, Sun Noon-10.30pm [the47steps@gmail.com](mailto:the47steps@gmail.com)

An advertisement for Maxim Brewery. On the left is a bottle of Double Maxim beer. The background is red with the text 'THE AWARD WINNING MAXIM BREWERY' in large, bold, yellow letters. On the right side, there are three circular award logos: 'MAXIM BREWERY SINCE 1997 DOUBLE MAXIM PREMIUM CRAFT BEER', 'MAXIM BREWERY Swedish Blonde CRAFT BEER', and 'MAXIM BREWERY MAXIMUS CRAFT BEER'. At the bottom left is a 'BBI 2016' logo. At the bottom right are two 'SIBA' award logos. The text 'The home of Double Maxim' is written in a cursive font at the bottom.

# Our Yorkshire Pub Rescue with Jon Richardson

## Review by Michael Wynne

This a four part series following trial and tribulations of the community of Fadmoor in the North Yorkshire Moors to reopen the Plough pub, which has been closed since 2011.

In September 2024 The Plough was purchased by the community with help from the UK Government's Community Ownership Fund. Work now begins on the renovation of the building to bring this fabulous pub back to a thriving, inclusive and sustainable hub for socialising.

The series follows the work of volunteers to repair and refurbish the derelict building and their efforts to raise £300, 000 to complete the work. This is proving a difficult job as each little

step in the renovation, throws up more expensive work requiring additional expense.

Social events have been organised to raise money and to get additional shareholders. One of the more unusual fundraisers was a sheep auction. Each episode charts the progress of the work and fundraising.

The final episode shows the finishing of the external work and rebuilding floors and ceilings and the programme ends with Richardson joining the committee in the unfinished bar sampling beer from the nearby Helmsley Brewery. I like the emphasis on everything local in both drink and food suppliers.

It is clear that Richardson has a real interest in pubs and the programme has raised the profile of the project, but there is the usual film of celeb in hi-vis and hard hat being given jobs to keep him away from the actual work.

The programme has been enjoyable as community ownership is an important way to preserve community assets.

A post on the pub's Facebook page says a second series is being made, leading up to the planned opening in September. The series is available to stream on the Channel 4 app.

## Great Stuff This Bass: National Bass Day 2026

### Easter Saturday is the day to celebrate all things Bass.

Draught Bass is the classic Burton on Trent pale ale and the red triangle is the world's oldest registered trade mark. Its recent history has been chequered, but it remains a classic beer and is one of my favourites.

The 4.4% beer strikes a balance between malt and English hops. Its availability had been in decline, but owners AB-Inbev have started to promote the beer again with new pumpclips and bar runners. The beer is brewed for Inbev in Burton at Marston's, so it is as close to its home as possible.

We are lucky that the Marine in South Shields is permanent stockist of the beer and the quality is always excellent. It is also regularly available at the Ship Isis in Sunderland.

Why not celebrate history in a glass on Easter Saturday **Michael Wynne**

# Pub Heritage Certificates

Within CAMRA's National Inventory of Historic Pub Interiors there are three grades. Three star pubs are of outstanding historic importance, displaying exceptional qualities of the highest order. This a recognised as such on the

CAMRA website. It was felt some sort of local recognition was needed in the form of a certificate. With that in mind, the three star pubs in our branch have been presented with theirs.

The certificate says that the pub *"Has been included on CAMRA's National Inventory in recognition of the outstanding historic importance of its little-altered interior."*

KP



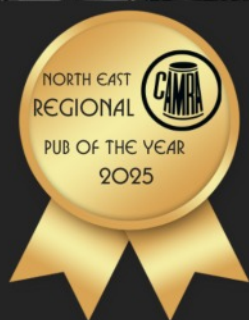
**Dun Cow- Ken Paul presents Josh Fletcher (right). Photo Andrew Dipper**



**Mountain Daisy - with one of the 7 tiled paintings; depicting Craggside.**



**Stag's Head - Stephen & Julie Sullivan**



FRI: 2PM - 10.30PM  
SAT: 12PM - 10.30PM  
SUN: 4PM - 10.30PM  
TUE - THU: 4PM - 10.30PM

THE STATION HOUSE, NORTH ROAD, DURHAM, DH1 4SE

VISIT OUR SISTER VENUE:

FRI: 2PM - 10.30PM  
SAT: 12PM - 10.30PM  
SUN: 2PM - 10.30PM  
TUE - THU: 4PM - 10.30PM



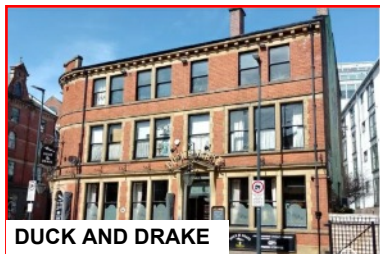
FRAM FERMENT, 29B FRONT STREET, FRAMWELLGATE MOOR, DH1 5EE

# A Stormy Weekend in Leeds.

By Fiona Monteith Preston

**In the depths of January, on the tail of Storm Goretti**, with snow and rain forecast, trying to get back to normal after the excesses of Christmas, the obvious thing to do would be a weekend trip to Leeds, right? Right??. Newcastle Central Station at 7am on a Saturday morning is a pretty cold and bleak place, but with a Greggs bacon butty and a cuppa inside, things didn't look quite so bad. The train departed on time and we shared the space with several Sunderland fans off to their FA Cup tie in Liverpool (and who started on the tinnies of beer as soon as the train started moving – and it wasn't Real Ale in a Bottle, or anything even vaguely like it) – it all seemed like a pretty great idea.

To be honest, it was a decade or so ago since I



tried any of the pubs in Leeds and my memories of them were pretty mixed, pretty mixed, but my other half (OH) and I had put the CAMRA app to good use

and chosen a couple of days' worth of pubs that were either in the Good Beer Guide (GBG), had scored well on beer scores or had historic interiors (or a mixture of all three).

Staying pretty central – what we felt we could comfortably fit in at a leisurely pace in the two days – we put together two loops – once VERY central, near the station and the other slightly more circuitous. At the last minute, we decided to swap these around due to the rain that was forecast on the Sunday (we thought shorter walks between pubs might be the better option in the rain and it turned out to be correct given Sunday's downpour).

The train arrived on time and we made our way to the first port of call – the curiously named **Wapentake** (rhymes with “bake” and is apparently an old Yorkshire word). A café/ bar type place, which had a really lovely vibe and had three beers on tap. My East London Five Points and my other half's (OH's) Theakston's Thirst Quencher were both in excellent condition and set a high bar for the beer quality for the weekend. Next was the excellent

**Duck and Drake** less than a minute away. This has the largest selection of cask ale on tap in Leeds- I counted 15 available and the ones we had were in very good condition. Bradfield's Farmer's Blonde and Wilde Child Cape Flattery for me and Vocation Victoria Porter and Wilde Child Coffee Porter for him indoors.

A quick coffee stop before arriving at the **Templar**- a



Greene King, GBG, Grade 2 listed, traditional pub which had 6 hand pulls on (I made the mistake of not spotting all of them before ordering a Greene King IPA – it was in good condition but fairly bland compared to some of the other beers available). OH had an Acorn Barnsley Bitter, which hit the spot.

Next was the polar opposite **North Bar** – one of the first micro bars in the North, opening in 1997. This has a much more

*Continued*

modern interior, with an excellent selection of beers nonetheless- our choices here were Thornbridge Made North and Ilkley Great Minds. We had planned to go to the famous **Whitelocks Ale House** next, but on opening the door, there was not even room for a small one- so tightly were people shoehorned in- one for the next day. Instead, we checked into our hotel and took the short walk across the River Aire to our final pub of the day- the spectacular **Adelphi**. On CAMRA's National



**WHITELOCKS**

Pale Ale for me and a Theakston's Old Peculiar for the OH set the day up well before heading back out into the rain.

The **Bankers Cat** was next- A Thornbridge brewery tap, another GBG entry and with an unusual pub to bank then back to

pub history. It is a CAMRA Outstanding Conversion and Restoration pub (OCR). Eight beers on handpull here, mostly from Thornbridge and the Crackendale was my beer of the trip. I

also had a Kelham Island Easy Rider- a blast from the past that I haven't had in many years. Him Indoors was delighted to try their Thornbridge 1838 (brewed on their Burton Union brewing system) and a little seen Thornbridge Panola. The interior of the pub was impressive and worth a trip downstairs to see their bank vault, which now houses a very private table and seating.

Next up, was **Tapped Leeds**, across the road- a big industrial styled brewpub, serving several of their beers that had been brewed on the premises. I

tried their Salad Days and my OH went for their Chocolate Porter. Both were excellent.

Back across the road and round the corner found us at **The Head of Steam**, which although practically empty, had a great selection of beers



**BANKER'S CAT**

available and looked like they had a wide selection of Belgian beers (complete with the correct glasses). However we stayed on the real ales and went for the Head of Steam Gold and the Northern Monk Sup.

Further round the corner saw us at our final pub of the trip- the Grade 2 listed **Scarborough Hotel**, part of



**SCARBOROUGH HOTEL**

the Mitchell and Butler chain. I went for the

**Continued**



**ADELPHI**

Inventory of Historic pubs, and rightly so, this Victorian pub was absolutely gorgeous and a fitting end to the day, where we both opted for Leeds Pale Ale from the interesting corridor bar.

**Sunday dawned – as** forecast- very wet and we were grateful to only have short distances between pubs today. First up- we tried **Whitelocks Ale House** again, shortly after opening time and not only could we get in, but we scored for a seat. Amazing looking place, with mirrors everywhere and a bar set up that gave the impression that all the bar staff were seven feet tall. A Kirkstall

Nicholson's Pale Ale (brewed by St Austell Brewery) and my OH finished up with one of his favourites- Titanic Plum Porter.

Overall, a very worthwhile trip and one that I would happily repeat. All pubs were worth a visit- my rule of thumb is to ask myself "Would I like this pub as my local?" and it was a resounding "Yes" in every case.

The best beer selection (in very good condition)- **The Duck and Drake**.

The best overall beer for condition – Thornbridge Crackendale at **The Bankers Cat**. Best interior – **The Adelphi**, closely followed by **Whitelocks Ale House** and **The Bankers Cat**.

Given that Leeds is only a slightly further journey than that to York, it is well worth considering for a visit. As Arnie says..." I'll be back".

With thanks to Leeds CAMRA for the use of their images on the CAMRA Website

<https://leeds.camra.org.uk/> (The Whitelocks photo was taken by the late Geoff Brandwood, formerly of the CAMRA Pub Heritage Group).

This link gives details of the pubs in this article with relevant links to the CAMRA Pub Heritage and OCR websites. <https://camra.org.uk/locations/branches/leeds-lee-204?>



## 10 great reasons to join CAMRA

- |  |  |
|--|--|
| <b>1 CAMPAIGN</b><br>for great beer, cider and perry                 | <b>2 Become a BEER EXPERT</b>                            |
| <b>3 Enjoy CAMRA BEER FESTIVALS</b><br>in front of or behind the bar | <b>4 GET INVOLVED</b><br>and make new friends            |
| <b>5 Save YOUR LOCAL</b>   | <b>6 Find the BEST PUBS IN BRITAIN</b>                   |
| <b>7 Get great VALUE FOR MONEY</b>                                   | <b>8 DISCOVER</b><br>pub heritage and the great outdoors |
| <b>9 Enjoy great HEALTH BENEFITS</b><br>(really!)                    | <b>10 HAVE YOUR SAY</b>                                  |

 **CAMRA** [camra.org.uk/join](https://camra.org.uk/join)

### Did You Know?

While watching the Men's Curling Final on TV at the recent Winter Olympics I enjoyed a bottle of **Broughton Wee Jock**. The label stated "80 Shilling". But what does that mean?

Well some beers brewed in Scotland were known as 60,70,80 and 90 shilling beers. This is from a 19<sup>th</sup> century method of stating the wholesale price of beer per hogshead. By the middle of the last century they became known as Light, Heavy, Export and Wee heavy; so :-

Light - (60/-) under 3.5% abv

Heavy- (70/-) between 3.5% & 4.0% abv

Export (80/-) between 4.0% & 5.5% abv (Wee Jock is 4.4% ABV)

Wee heavy (90/-) over 6.0% abv

When GBR were defeated, I consoled myself with a bottle of **Broughton Old Jock**. At 6.7% that fits nicely into the Wee heavy category. A beautiful beer!

## Pub Quiz ( answers on Page 27)

1. Who left The Faces group in 1975 to pursue a solo career?
2. Remember when Fred Housego won Mastermind in 1989? What was his job?
3. In which German city was Beethoven born ?
4. Did Vincent Van Gogh cut off his left ear or his right ear?
5. Who was the first scientist to be buried in Westminster Abbey ( 1727)?
6. What was the name of the family in Peter Pan?
7. What is the state capital of Texas?
8. Who had a hit with Macarthur Park in 1968?
9. Who did King Charles III name as the Duke of Edinburgh in 2023
10. Still alive at the time of writing, who played Fancy Smith in Z Cars ( from 1962)
11. What is an aviatrix?
12. Who played a nervous priest in Four Weddings and a Funeral ?
13. What was Arnold Ridley's role in Dad's Army?
14. What was Elvis Presley's middle name?
15. Who's eleventy-first birthday took place in The Lord of the Rings?
16. If months were listed alphabetically, which one is first ?
17. During which month do people sleep the least?
18. When do we count down 100 days to Xmas? ( Month will do)
19. Alphabetically, which is the first day of the week?
20. Alphabetically, who is the last of the Seven Dwarfs?



It's always impressive when a historic pub is lit up at night. This was taken outside **The Stags Head** the night of our last Branch Meeting. If you were there, look closely you may be able to see yourself through the bay window! Note the gold stags head at the top of the building.

If anyone has any night time pub or club photos you would like to share, please email [magazine01@sst.camra.org.uk](mailto:magazine01@sst.camra.org.uk)

Thank you

# Helmsley Hop

By Mark Taylor

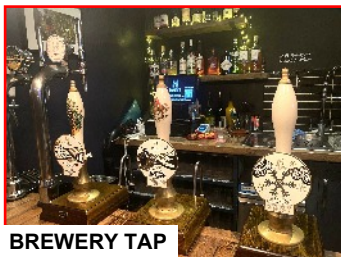
Just shy of 50 miles south of Sunderland, you'll find the North Yorkshire market town of Helmsley (population 1,699 :Source 2021 census). With the River Rye flowing on its southern boundary, Helmsley is in the heart of Ryedale. Northwards is the North York Moors National Park while to the south is the Yorkshire Wolds. East is the Vale of Pickering. The road west leads to Thirsk & the notorious Sutton Bank. So it's a good touring base, with plenty to see and do in town.

Helmsley has 3 pubs (hotels) around the Market Place. A further cafe/bar plus a brewery tap are located in adjoining Bridge Street. A short walk along High St finds the Feversham Arms Hotel.



HELMSLEY BREWERY TAP

This is a spa hotel with a bar. We didn't make it to the latter; but all six licensed premises in town sell 'real' cask ale. Another commonality was the welcome presence of roaring log burner in each bar. Well it was mid Winter!



BREWERY TAP

The bars we did visit served ale to high standard.

We started our 'tour' at one of the best. The **Helmsley Brewery Tap**. What became a theme: we got ourselves comfortable by the log burner and tried each of the three cask offerings from Helmsley Brewing. Both Mrs T and I agreed (an event in itself)! The Yorkshire Snowflake Pale Ale was our favourite. Refreshing and an easy drinking session beer at 3.8% ABV. The Howardian Gold Golden Ale (4.2%) and Striding The Edge Northern Pale (4.0%) were close, early contenders for Ale of the Day too. The Striding The Edge beer is a recognition that Helmsley is start (or

end) of the 110 mile long distance footpath the Cleveland Way.

Helmsley Ales policy is not to supply the other licensed premises in town with their beer. So you have to visit the Brewery Tap to try them. However

outside of town and as far as the Yorkshire coast, Helmsley Ales are appearing on bar tops.

Late in 2025, they established a further brewery tap in Whitby. This can be found in the old Wesley Hall in Church St if you are in the Whitby area.

Back in Helmsley, the tea



BREWERY TAP

time twilight had disappeared now as we ventured into the night, across the Market Sq into the Marstons run **Royal Oak**. Two handpulls awaited inside a more



ROYAL OAK

traditional market town bar. There was a busy bar, which is good sign in mid January early on a Thursday night.

**Continued**

Farmers and other workers enjoying a pint , game of pool/ darts after a shift. I settled on the Black Sheep Bitter which was dependable as always. The Wainwright Gold was the alternative and this too was an easy sup. I liked the Royal Oak. No airs and graces. Just a proper boozier, where you feel at



**BLACK SWAN**

ease.

A few paces across the Market Place but a distance away along the social strata; is the darling of the Sunday Supplements. **The Black Swan**. In 2023, the Telegraph described this smart hotel as thus: *“attractive jumble of low beamed ceilings, timber posts, surprise staircases and twisted corridors”*. Allied with the history, as a former coaching inn, the Black Swan is the prestigious venue and hotel in town.

But our priorities were food, which it is also noted for. My wife said the Venison Pie was ‘delicious’ and looked good too. And no complaints about my Cod n Chips either. All washed down with a Black Sheep Bitter.



**U TAGGHIU ANTICU**

Fed; we made a short walk to the new bar on the block at the end of Bridge Street. Arriving at the oddly named **U Tagghiu Anticu**. It means ‘The Ancient Cut’ in Sicilian. The bar was a butchers shop in its former life. Now serving Sicilian style tapas along with a vast array of wines and spirits. Allied with two cask ales from the Driffield based Wold Top brewery. On this occasion the offering was Wold Top Bitter(3.7%) and the award winning Wold Top Gold (4.8%). Both in excellent condition. The U Tagghui



**U TAGGHIU ANTICU**

Anticu was full to its compact rafters on our visit. We also began meeting the same people we chatted too from earlier hostelryes now. It is that kind of place. Finally we left this quirky bar and headed back to our bar in our hotel at The Feathers.

Another bar, another log burner. We settled in our seats, after ordering the house ale - Camerons Pickwick Pale Ale . With our final pint in hand we saluted the end of our Helmsley pub crawl.

With the summer on its way, lighter nights , better weather ( but less log burning action than January) - there are so many places on our door step to explore. Which is beauty of our part of the world where we are surrounded by unspoiled countryside and coasts.

Helmsley is a short drive away for a quality day trip. If you stop for a couple of pints , certainly worth the pause in any journey.

To reach Helmsley by public transport from Wearside involves a bit of thoughtfulness. Grand Central Trains to York. East Yorkshire buses service 31X runs 3 times per day( except Sundays) from the Minster City to Helmsley. Sadly the last train from Helmsley left in 1964! However the old railway forms part of a pleasant walking route to Harome some 3 miles away.

Harome has two very rural inns/ hotels. One is the Pleasant Inn with good food. The other: The Star Inn with thatched roof and Michelin star restaurant. Both sell real cask ale . Including from Helmsley Brewing! All on our doorstep.

## Quiz Answers

1 Rod Stewart	11 A female aviator
2 Taxi Driver	12 Rowan Atkinson
3 Bonn	13 Private Godfrey
4 Left ear	14 Aaron
5 Sir Isaac Newton	15 Bilbo Baggins
6 The Darlings	16 April
7 Austin	17 February (shortest month)
8 Richard Harris	18 September
9 Prince Edward	19 Friday
10 Brian Blessed	20 Sneezy

### TRADING STANDARDS

If you have any complaint about your beer or cider, such as poor quality, short measures or no price list displayed, you should mention it to the pub management in the first instance. If you need to pursue the complaint further, we recommend contacting the local Trading Standards Office. Contact details are given below :-

SOUTH TYNESIDE	<a href="https://www.southtyneside.gov.uk/article/68067/Make-a-complaint">https://www.southtyneside.gov.uk/article/68067/Make-a-complaint</a>
SUNDERLAND	Citizens Advice consumer helpline: 0808 223 1133

### PUBLIC TRANSPORT INFORMATION

**Some useful contact details for Tyne & Wear Metro and local bus services.**

Arriva - 0344 800 44 11	<a href="http://www.arrivabus.co.uk/north-east/">www.arrivabus.co.uk/north-east/</a>
Go North East - 0191 420 5050	<a href="https://www.gonortheast.co.uk/services">https://www.gonortheast.co.uk/services</a>
Nexus ( Metro & Buses) - 0191 2020747	<a href="http://www.nexus.org.uk/">www.nexus.org.uk/</a>
Stagecoach - 0191 566 0231	<a href="http://www.stagecoachbus.com/about/north-east">www.stagecoachbus.com/about/north-east</a>
Traveline North East 0871 2002233	<a href="http://www.travelinenortheast.info">www.travelinenortheast.info</a>



**HOPETOWN**  
- DARLINGTON -

# DARLINGTON BEER FESTIVAL 2026

**CAMRA MEMBERS  
FREE ENTRY  
(TICKET REQUIRED)**

**20TH-22ND  
MARCH 2026**

**50+**

**CASK  
KEG  
CIDER**

**WINE/LOW ALC  
STREET FOOD  
HOMEBREW CHALLENGE**

**SCAN HERE** 

**GET YOUR TICKET NOW**

**ALSO FOR VENUE INFO**

**VOLUNTEERING AND BEER LIST**

