

**SUNDERLAND & SOUTH TYNESIDE  
CAMPAIGN FOR REAL ALE  
CAMRA ANGLE ISSUE 58  
WINTER 2019  
FREE PLEASE TAKE ONE**



**SUNDERLAND BEER & CIDER  
FESTIVAL**

**THE BEST YET!**

**See report inside**

**Plus!**

**Regional Pub of the Year**

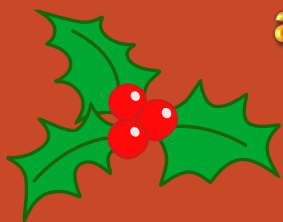
**Pub Crawls**

**Pub News, Brewery News,**

**Cider News & SPBW News**

**Book Reviews**

**and much more**



# THE STEAMBOAT

**A Friendly Welcome Guaranteed!**

**CAMRA's Sunderland & South Tyneside  
Pub of the Year 2015, 2016, 2017 & 2018  
Regional Pub of the year 2015 & 2016**

**Nine ever-changing Cask Ales and  
now four Real Ciders !**

**50 Whiskies, 60 Rums & 30 Gins**

**27 Mill Dam South Shields  
NE33 1EQ Tel: 0191 4540134**



## Welcome to the Winter edition of CAMRA Angle.

**A reminder that the online voting website for the 2020 Branch Pub of the Year (POTY) & Branch Club of the Year (COTY) is still open for branch members until midnight on the 1st February 2020.**

To vote please go to our special voting website at:

<https://evp.sst.camra.org.uk/>

To logon to the site you will need the same username & password details used to logon to all CAMRA national websites.

The list of pubs eligible for our POTY in 2020 are the 22 pubs the branch entered

into the CAMRA Good Beer Guide (2020). The list of clubs eligible for COTY 2020 are the eight clubs in the branch area that serve Real Ale.

You must choose at least one pub and you can vote for up to three pubs & three clubs. Your first choice pub/club will be awarded five points, second choice three points & third choice one point. Members without access will be contacted by post for a postal vote.

The pub & club with the most points **will be awarded the title of branch POTY/COTY 2020.**

For an update on this year's competition, see pages 8 & 9

***Enjoy the read and all the best.***

### EDITOR

**Ken Paul/ Sid Dobson**  
Magazine01@sst.camra.org.uk

### FANCY YOURSELF AS A WRITER

WE are always on the lookout for real ale related stories to be used in **CAMRA ANGLE**. They can be historic or current, locally-based or involving travel to exotic locations such as Middlesbrough, Montreal, Moscow or Morpeth!

**The deadline for Issue 59 is  
Feb 20<sup>th</sup> 2020**

### CONTACT US

HAVE you got opinion on the pubs or beers available in our branch area, or on any other matter? Get writing now, and let our readers know what you think. We also welcome comments about the magazine. Please email us at [Magazine01@sst.camra.org.uk](mailto:Magazine01@sst.camra.org.uk).

\*\*\*\*

**CAMRA ANGLE** is published by the Sunderland & South Tyneside Branch of CAMRA © 2019. Views or comments expressed in this publication may not be necessarily those of the Editor or of CAMRA.

## In this issue...

<b>Features</b>	
Brewing up a storm at Brewlab	9
Regional Pub of the Year Presentation	11
Cider Update	13
Weardale Challenge	14
The Best Yet - Beer Festival Report	16
Good Beer Guide 2020 Review	19
Real Ale in Ryhope	20
Hebburn	22
Wild West End	26
Weird, Wondrous & Historic Pubs	30
<b>Regulars</b>	
Pub News	6
Regional News	7
Brewery News	8 & 9
Other News	10
CAMRA Discounts & Locale	25
SPBW update	27
Pub Quiz & Answers	29 & 30



## Branch Contact Information

<b>Chairman</b>	Michael Wynne	chair@sst.camra.org.uk
<b>Secretary</b>	Lynn Dobson	secretary@sst.camra.org.uk
<b>Treasurer</b>	Steve Drummond	treasurer@sst.camra.org.uk
<b>Membership</b>	Peter Tong	members@sst.camra.org.uk
<b>Magazine Editor</b>	Ken Paul / Sid Dobson	magazine01@sst.camra.org.uk
<b>Webmaster &amp; Social Media.</b>	Ian Monteith-Preston	webmin@sst.camra.org.uk
<b>Pubs &amp; Clubs</b>	Ken Paul	pubsofficer@sst.camra.org.uk
<b>Cider Rep.</b>	Steve Clough	cider@sst.camra.org.uk
<b>Social Secretary</b>	Robin Sanderson	social@sst.camra.org.uk
<b>Darwin/ Brewlab BLO</b>	Michael Wynne	DarwinBLO@sst.camra.org.uk
<b>Maxim BLO</b>	Ken Paul	MaximBLO@sst.camra.org.uk
<b>Pubs Preservation</b>	Dave Craggs	pubpreservation@sst.camra.org.uk

## PUBLIC TRANSPORT INFORMATION

### Some useful contact details for Tyne & Wear Metro and local bus services.

Arriva - 0844 8004411	<a href="http://www.arrivabus.co.uk/north-east/">www.arrivabus.co.uk/north-east/</a>
Go North East - 0845 606 0260	<a href="http://www.gonortheast.co.uk">www.gonortheast.co.uk</a>
Nexus ( Metro & Buses) - 0191 2020747	<a href="http://www.nexus.org.uk/">www.nexus.org.uk/</a>
Stagecoach - 0191 5675251	<a href="http://www.stagecoachbus.com/about/north-east">www.stagecoachbus.com/about/north-east</a>
Traveline North East - 0871 2002233	<a href="http://www.travelinenortheast.info">www.travelinenortheast.info</a>

## TRADING STANDARDS

If you have any complaint about your beer or cider, such as poor quality, short measures or no price list displayed, you should mention it to the pub management in the first instance. If you need to pursue the complaint further, we recommend contacting the local Trading Standards Office. Contact details are given below :-

<b>SOUTH TYNESIDE</b>	0191 4247887 for residents or Citizens Advice Consumer Service on 03454 040506
<b>SUNDERLAND</b>	Contact Citizens Advice Consumer Service on 03454 040506.

## DIARY DATES

### DECEMBER

	THERE WILL BE NO BRANCH MEETING IN DECEMBER
--	---

### JANUARY 2020

BRANCH MEETING	WED 8 <sup>TH</sup> JANUARY 8PM - <u>WILD BOAR HOUGHTON LE SPRING.</u>
POTY/COTY VOTING ENDS	FRIDAY 31 <sup>ST</sup> JANUARY 2020

### FEBRUARY

GREAT BRITISH BEER FESTIVAL WINTER	4TH- 8TH FEBRUARY 2020, BINGLEY HALL BIRMINGHAM,
BRANCH MEETING	TBC
NE REGIONAL MEETING	SATURDAY 13TH FEBRUARY 1300- 1600, NEWCASTLE

### FUTURE DATES

CAMRA AGM & MEMBERS WEEKEND	3 <sup>RD</sup> -5 <sup>TH</sup> MAY YORK
-----------------------------	---



## Members Matter - 1

**Sunderland & South Tyneside** branch membership 682 (664 3 months ago)  
*Other branches in the region:* - **Cleveland** - 912 (904), **Darlington** - 445 (447),  
**Durham** - 831 (818), **Tyneside & Northumberland** - 2081 (2094).  
**Nationally** membership stands at 192947 (191571)

**See page 25 for more Members Matter and page 31 for details of how to join.**

## Thanks for having us

Many thanks to **Chesters - Sunderland, Maxim Brewery - Houghton le Spring** and **The Marine - South Shields** for their hospitality in hosting recent branch meetings; Also to **The Mid Boldon Club - East Boldon** for our Beer Festival planning meetings. For details of some future meetings, see our Notice Board on page 4.

### ADVERTISING YOUR BUSINESS

CAMRA Angle is published 4 times a year, in March, June, September & December. Nearly 3000 copies are distributed throughout the North East (and beyond) and is a popular download from our website:-

<https://sst-arch.camra.org.uk/viewnode.php?id=65188>

### INTERESTED IN ADVERTISING IN ISSUE 59 DUE MAY 2020?

#### SEE OUR COMPETITIVE RATES BELOW

#### ADVERTISING RATES

Full page ( single issue).....£90

Full page (4 consecutive issues).....£81 per issue.

Half page ( single issue).....£55

Half page (4 consecutive issues).....£50 per issue.

Quarter page ( single issue).....£35

Quarter page ( 4 consecutive issues).....£31.50 per issue.

A free design service for adverts is available if required. For further details please email [ads01@sst.camra.org.uk](mailto:ads01@sst.camra.org.uk)

**Please support our advertisers in this magazine, for without them we would not be able to present CAMRA Angle for your enjoyment and information.**

## Pub News

### HEBBURN

**Dougie's Tavern** is now offering 10% discount off real ale for CAMRA members.

### HOUGHTON-le-SPRING

**The Copt Hill** has closed again. It has been reported on social media that the operators of **The Stackyard** in West Herrington are looking to take it over.

### JARROW



Real Ale is available now at the **Crown & Anchor** in Jarrow town centre. Presently in charge is one Mr Jess McConnell. Hadrian Border Farne Island features.

### SOUTH SHIELDS

**The Criterion** and it's near neighbour **The Pier** are offering CAMRA members 10% discount off real ale.

**The Queen Victoria** has closed and is up for let.

The Riverside near the Customs House has reopened as the

**Riverview Bar & Kitchen**, with 5 handpulls.

Meanwhile, nearby **The Steamboat** have increased their range of real ciders to four.

In association with Working Hand Brewery of Leamside Durham, a new Brewery Tap called **1 More Than 2 Brew Limited** is due to open just down Station Road from the Riverview and the Steamboat. More news in the next issue.

Real ale is no longer available in **The Bar 52 Sports Bar** in the Sea Hotel.

**The Wouldhave** has closed for a major refit including expansion into the adjoining night club. It's due to reopen March 2020.

### SUNDERLAND

First reported in the spring edition of CAMRA Angle, a new micropub will open in Fulwell before the end of the year. Called **The Lighthouse**, it will take over the former Bojangles Coffee Shop just down Sea Road from The Blue Bell (see picture above right)

Initially there will be three handpulls, two of which will be Maxim beers



There will be a review in the next CAMRA Angle.

As reported in the press there was a fire in the upper floor of **The Wolsey** in Roker in October so the pub is closed with no reopening date as yet..



**The Mill Italian Kitchen** (above) near Southwick has been added to Whatpub, with one handpull in use.

Once the home of Bull Lane Brewery, **The Clarendon** which reopened a year ago, appears to be closed again.

**The Peacock** which closed for refurbishment has reopened under new management. As some work is still ongoing weekday hours are restricted to evenings only, check Whatpub for updates.



Formerly the Royalty on Chester Road, the



**Stumble Inn** (above) has three handpulls, with one in use at last visit and has now been updated on Whatpub.

### WHITBURN

A petition has been raised protesting the proposed conversion of the **Grey Horse** into a shop and flats. So its good to report that opposite a new micropub, called **Blues** is

due to open soon. There will be more in the next issue.

### Further afield

**The George & Dragon, Hudswell Richmond** has made the final four of the **2019 CAMRA Pub of the Year**.

A 2016 winner, this North Yorks pub is joined by the Swan with Two Necks in Pendleton, The Bell in Aldworth, Berks and the Red Lion in Preston Herts. The winner will be announced in February.

See page nine for the presentation of the NE Regional Pub of the Year to **The Grey Horse**, Consett.

### **The Cooperage, Newcastle Quayside.**

The Grade II listed pub from the 15<sup>th</sup> Century has been closed for ten years. Protesters gathered recently outside the pub concerned that no action was being taken to save it from disrepair. A petition has been organised calling on Newcastle Council to step in a save the building. The owners have said they have plans for the Cooperage. We await any development with interest.

The **Woodman Inn** in Durham, which closed a few weeks ago, has been taken over by **Black Storm Brewery** of Whitley Bay.

## THE STATION HOUSE, DURHAM



CASK ALE / CRAFT KEG BEER & CIDER /  
GUEST GINS / CRAFT BOTTLES & CANS /  
BOTTLED FINE CIDER / WINE  
SINGLE MALTS /  
TRAIN INFORMATION SCREEN

NOW SERVING DURHAM BREWERY HELLES

MON-THUR. 4PM-10.30PM / FRI-SAT. 12PM-11PM / SUN. 2PM-10.30PM

STATIONHOUSEDURHAM.CO.UK / F. STATIONHOUSEDURHAM /  
@STATIONHOUSEDURHAM

THE STATION HOUSE, NORTH ROAD, DURHAM, DH1 4SE



## OPENING 27TH NOVEMBER

YOUR NEW LOCAL BOTTLE SHOP AND TAP ROOM.  
SELLING DRAUGHT, BOTTLES AND CANS OF CRAFT BEER,  
FINE CIDER, AND MORE.

FRAMFERMENT.CO.UK / F. FRAMFERMENT /  
@FFERMENT /

99B FRONT STREET, FRAMWELLGATE MOOR, DH1 5EE

## Brewery News - Maxim

Maxim Brewery are pleased to announce that they were awarded the Sunderland Echo Portfolio Business Awards 2019 Small Business of the Year at a recent ceremony at the Stadium of Light.



As well as the six core Maxim beers, there will be several seasonal ales as follows:-

### December

New this month is **Winter Tipple**, a 4% dark winter warmer.

Another dark winter ale is the reappearance of 5% **Santas Soot**.

A further Xmas ale is **Hapi Christmas Ale**. At 4.5% this uses New Zealand hops.

Looking forward to next year, in January two specials will be **7C'S** (4.2%) - brewed using seven hops beginning with C; and **Idaho 7** (4.5%) using Idaho hops for the first time.

In February **Dragon Ale** returns by popular

demand along with a new beer- **Sour Cherry & Chocolate Stout** (4.8%)

In March **Raspberry Porter** makes a welcome return along with **Citra**, a 4.4% American Pale Ale.

### "Open Bar Nights"

These continue to be popular with the number of handpulls extended to nine.

The Brewery Shop is usually open Tues-Friday, 12:00-17:00. With a selection of bottles & other branded gifts, beer gift packs etc. Enquiries - 0191-584-8844

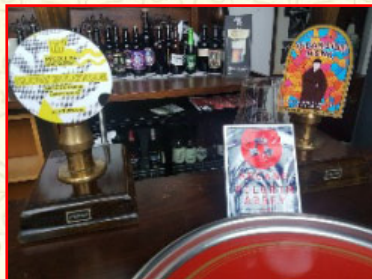
**Ken Paul**



## BREWING UP A STORM AT BREWLAB WITH THE HAIRY DOG

In Mid October le Chien Hirsute (Hairy Dog) held one of their pop-up events at Brewlab, Sunderland with an evening of Belgian beers.

Three cask beers were available: **McColl's Slow Belgique**, a biere de garde at 5.9% and two specially brewed beers; **Wearside Monk from Brewlab**, a Belgian- style Trappist dark Dubbel at 6.9% and from **Arcane Pilgrim Abbey**, an 8% pale Tripel style beer.



To compliment the Belgian- inspired cask ales, an extensive range of beers imported specially from Belgium representing some iconic beers were also available. I tried two of these bottled beers: first **Straffe Hendrik Wild**, a 9% yeasty pale ale from Bruges which is only released once a year in April and **Rodenbach Alexander** a 5.9% Flemish red ale flavoured with sour cherries.

When consuming beers that are far stronger than are normal in the UK, it is wise to have something to eat. The Hairy Dog had this covered too; we shared a cheese board which included Brie, Blue



Stilton, Red Leicester and Belgian Chimay cheese from the abbey brewery of the same name and a charcuterie platter, Both included pickles, salad and sourdough bread. These were eaten on tables set out inside the brewhouse. How appropriate.

A very enjoyable way to spend a Friday evening, I look forward to the next event.

**Michael Wynne**

## DARWIN BREWERY NEWS

Darwin Brewery beers are starting to be available in more outlets in the region with The Central, Ship Isis, Museum Vaults, Fitzgeralds & Chaplins in Sunderland and the Bluebell in Fulwell. Also : The Marine and Black Horse, West Boldon in

South Tyneside and the Coal House and Coal Face in Seaham Harbour are taking beers with increased regularity.

A collaboration brew with Black Storm Brewery of Whitley Bay will be available in cans shortly.

Darwin are going to be supplying a house beer for Chaplin's in Sunderland which will always be on and available nowhere else. This session strength Pale Ale should be making an appearance in the very near future.

**Michael Wynne**

## More News

**CAMRA has welcomed the House of Commons Treasury Committee's report on the Impact of Business Rates on Business.**

**CAMRA National Chairman, Nik Antona commented:**

*"Pubs pay 2.8% of the Business Rates bill but only account for 0.5% of total business turnover. This is an overpayment of around £500 million by the sector each year. The report highlights that Business Rates do not fall on all businesses equally and they place a far greater cost on bricks and mortar, than those that operate mainly online."*

*"The crucial role that pubs play as the social heart of many communities cannot be moved online. That is why it is vital that the system is drastically reformed or replaced."*

Tickets have gone on sale for the **2020 CAMRA Great British Beer Festival Winter**. This will be the first of three years it will be held in Birmingham, at the New Bingley Hall from 4th-8th February. Look out for a full report in Issue 59. <https://winter.gbbf.org.uk/>

**The SIBA ( Small Independent Brewers) Business Awards 2020** will for the first time include an award for the UK's Best Independent Craft Beer Taproom, following huge growth in the number of breweries opening their doors and serving beer on their premises.

Over a quarter of independent breweries now have taprooms serving the freshest possible beer and engaging with their local communities, often building a loyal local following of beer-lovers.

These awards opened for entries at the beginning of November, and the winners will be announced at the SIBA flagship event 'BeerX UK' in Liverpool, March 2020.

Did you know every year CAMRA hold a **Best CAMRA Branch Website Competition**? Judging by some CAMRA volunteers has begun and the winner will be announced at the **CAMRA AGM** in York in April.

At the same time, the **Best CAMRA Magazine** winner will be announced, so fingers crossed please for both competitions please.

**Marstons have sold 137 pubs to Admiral Taverns.** The only pub that this sale affects in Sunderland & Sth Tyneside is The Black Bush in Washington, presently a non real ale pub.

Also, Marstons have signed a deal with Shipyard Brewery of Maine, USA to brew their American Pale Ale in the UK for the next 15 years.





On Saturday 2<sup>nd</sup> November 2019 what seemed like the entire membership of the North East CAMRA region descended on the **Grey Horse Consett** for the presentation of the Regional Pub of the Year Award. This was made to manager Sandra Wilkinson by Regional Director David Brazier.



The staff, although rushed off their feet all afternoon, made us feel very welcome, serving an excellent choice of beers and ciders. Some of the beers were brewed on the premises, behind the pub in the Consett Aleworks.



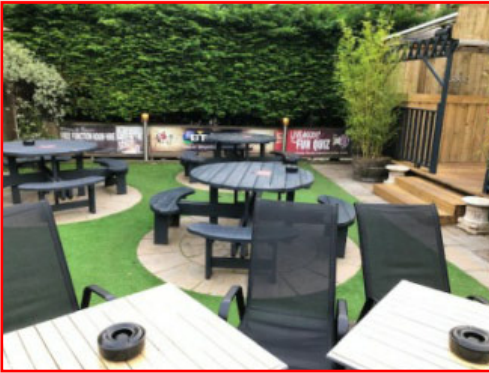


# THE AVENUE.

Zetland Street, Roker, Sunderland, SR6 0EQ

Tel :- 0191 5677412.

Website : [theavenue.pub](http://theavenue.pub). Facebook : [theavenueroker](https://www.facebook.com/theavenueroker)



- 8 handpulls serving real ales & up to 10 real ciders
- 20p a pint discount for card carrying CAMRA members
- We are in The 2020 Good Beer Guide

**Sunderland Cider Pub of the Year AND  
CAMRA North East Regional Cider Pub 2019**

**MONDAY - Poker Night**

**TUESDAY - Bingo**

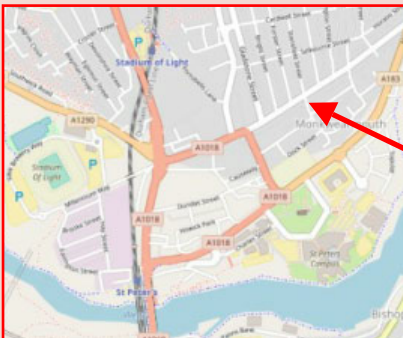
**WEDNESDAY - Free Pool & Jukebox**

**THURSDAY - Quiz Night**

**SUNDAY - Domino Handicap**

**Function Room , Beer Garden, Upstairs Games Room**

**SKY SPORTS and BT SPORT**



**Bus Stops for Sunderland - South Shields E1 service are nearby on Roker Avenue.**

## CIDER UPDATE By The Inncider

### NE Regional Cider Pub of 2019



*Photo by Steve Clough (using Bill's camera)*

On Sunday 15<sup>th</sup> September 2019 a presentation was held for the above award. Owner of **The Avenue**, **Dave Graham**, is pictured receiving his well earned certificate from CAMRA Regional Cider Coordinator, **Bill Wilkinson**.

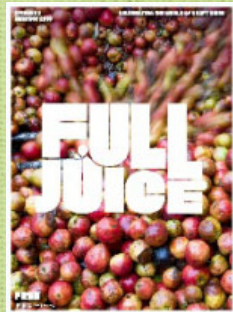
For details of The Avenue see advert opposite.

The national winner was The New Union, Kendal.

A new quarterly free cider magazine is now being published. Called **Full Juice**, the publisher and editor is Susanna Forbes, author, cider judge and one half of Little Pomona Orchard and Cidery in Herefordshire.

The magazine will be available at some cider selling pubs in the branch soon.

*Photo :- Bill Bradshaw.*



#### PUBS IN THE BRANCH THAT SELL REAL CIDER

##### Hebburn

Longship

##### Houghton Le Spring

Wild Boar

##### Jarrow

Ben Lomond

##### South Shields

Alum Ale House

Cask Lounge

Fountain

Marine

##### South Shields(cont)

Steamboat

Voyager

Wouldhave \*

##### Sunderland

Avenue

Blue Bell

Chaplins

Chesters

Dun Cow

Engine Room

##### Sunderland (cont)

Fitzgeralds

Ivy House

Museum Vaults

Ship Isis

William Jameson

##### Washington

Courtyard

Sir William de Wessington

\*Temporarily closed for refurbishment

Please contact the magazine if you have any updates - Thanks.



## THE WEARDALE CHALLENGE

While flicking through the Good Beer Guide I noticed, not for the first time, on the map of County Durham a line of real ale pubs from Crook westwards up the Wear valley to St Johns Chapel. It got me thinking that would make a good pub crawl. There are seven such pubs in Weardale but as this trip would be by public transport, a more manageable number seemed to be four – Crook to Stanhope.



There is a Weardale Bus service every hour and the Weardale Railway Heritage Railway that runs between Stanhope and Bishop Auckland. So that sowed the seeds for the challenge that seven of us undertook on the last Saturday in September

We all met in Durham Bus Station to catch the Arriva X46 bus to Crook.

One of our crowd was a friend from Australia so this was a special treat for him revisiting the Dales.

At Crook we had the inevitable Spoons breakfast at **The Horse Shoe (below left)**. As well as the usual offerings there included a couple of Maxim beers - Double Maxim and Hallertau Blanc (available soon). The pub was full of young families having breakfast; they mustn't get fed at home in Crook.

We caught the 101 bus in the Market Place nearby to arrive at our most westerly point, Stanhope, after a pleasant 30 minute ride up the dale. The bus stopped outside **The Grey Bull**, about five minutes from the town centre. The pub (below) was OK ; it was comfortable and the locals were friendly. The beer was so –so – Eagle IPA and Hobgoblin.



The next pub would be in Frosterley – **The Black Bull**, my favourite of the day, so it was outside to catch the 101 back down the valley. Waiting for the bus we got chatting to a 90 year old woman and her son sitting in their front garden. Her claim to fame was she had never left the dales, not even been to Durham. Her son was a wood carver who was commissioned to make a



plinth to stand the Ashes on at Lords!

So, after a 10 minute journey we alighted on the edge of Frosterley to find the Black Bull (above) tucked away down towards the railway line and river.

This is well worth a visit. With stone floors, wooden beams and various artefacts dotted around the place, this family run pub is unique.

It is the Durham CAMRA branch country cider pub of the year. They have six



handpulls (four beers, one cider and one perry) but no pump clips! I've been before, so knew what to expect but to a newcomer it looks like there is no real ale on. The pump clips are stuck on a board



at the end of the bar.

One image I captured was the contrast between the old telephone and the chef on his mobile phone in the background.

Next in the itinerary was to use the train to get to



Wolsingham. Timing was key leaving the pub to catch the train, which operates three times a



day. The train was a single coach 50's heritage diesel with more comfortable seating than a more modern train. We asked the chatty volunteer guard for seven concessionary tickets "They all say that" he said jokingly.

After a short ride, we alighted at Wolsingham for a 10 minute walk to our next pub, **The Black Lion**. This is a former CAMRA NE region cider pub of the year.

Expecting another relaxing drink we entered the bar into the middle of a stag do. The fifteen plus guys were half our age but soon we were joining in and we challenged them to a quiz. Although outnumbered by over two – one, we won!

Of the five handpulls, one was cider and another was called Black Lion Old Herbert, brewed for the pub by High House farm Brewery. The Beer Guide states they sell several ciders, but I only saw evidence of one.

We reluctantly tore ourselves away after about 90 minutes to board the bus back to Crook. We looked for a chippy, but nowhere was open where we could sit and eat so we caught the bus back to Durham and climbed up to the Market Place for tea.



Suitably stuffed, we then headed down to the bus station to travel to Chester le Street. Here we were forced to wait over half an hour for our connection home, so the only alternative was **The Butchers Arms**, a Marston's house and our final pub. I finished the day with a pint of Pedigree.

So, a great but exhausting day out. Five friendly pubs, all in the Good Beer Guide, with some friendly locals, and a stag do thrown in. While I can't guarantee the latter, a trip up Weardale is well worth it. Just may take some planning it that's all.

Free consultancy service available.

**Ken Paul**



## THE BEST YET!

### THE THIRD SUNDERLAND CAMRA BEER AND CIDER FESTIVAL AT THE POINT TOOK PLACE FROM 3<sup>RD</sup> TO 5<sup>TH</sup> OCTOBER.

Again, we had put together a range of 30 real ales from as far north as Angus and Berkshire to the South. Local brewers Darwin and Maxim were both represented and there were a range of beer styles from milds to stouts/ porters and New



World IPAs.

For the first time, we had more than one mild; a much-neglected beer style and endangered species. These were Titanic Classic Mild from Stoke on Trent, North Riding Rum & Raisin Dark Mild from Scarborough and Naylor's Toffee Mild from Crosshills near Skipton.



This was complemented by a selection of 10 ciders and perries.

On Thursday, there was an opportunity to see the film *A Passion for Vaux* marking the twentieth anniversary of act of vandalism that deprived the city of its only major brewer.

We also had a Meet the Brewer session with Mark Anderson of Maxim and an opportunity to meet a cider maker with Tim Woolley from Harleston Cider. All were very well



received.

Thursday and Friday were reasonably busy, but a problem we have had at previous festivals is that the Saturday has always been quiet. This year, we decided to stay open all day Saturday, and to have a programme of acoustic music. This was organised by our Social Secretary Robin Sanderson, whose **Steamboat Collective** (below) opened and



closed the programme.

I must admit, I had reservations about this new venture, **but I was wrong!** We had more people through the door in the first couple of hours than all of Saturday last year.

The music was well received and we will be repeating the experience next year.





### A clean sweep for "God's Chosen County."

The winners in the Beer of the Festival competition were all from Yorkshire. Joint winners were **North Riding Rum & Raisin Dark Mild** and **Naylor's Toffee Mild**, both from North Yorkshire (pictured right). The first time that this beer style has won the award,



and, runner up was **Geeves Smokey Joe** from South Yorkshire.

The Cider of the Festival was Harleston Cider Lite.

So, a big thank you to all our sponsors, the management at the Point and our army of volunteers who helped before, during, and after the festival

We would like to thank all the musicians who gave



of their time freely, with some travelling considerable distances. This is much appreciated so thanks to George Pallas, Jim Murray (left), Hek, Twice Brewed, John Wilkins, the Booze Brothers (right) and members of the Steamboat collective. Special thanks to two of the Collective, Stu Nagouse and Chris Hill for providing, and managing the sound system throughout.

And finally, to all who came along and drank the beer and cider. We look forward to seeing you all next time!

**PS While on the subject of CAMRA beer festivals**, we are sad to report that the **2019 Ale & Arty Festival in Stockton**, held in February will be the last. This was an excellent festival but as with many CAMRA activities, the organisers are getting on and there are no younger members willing to take up the baton.

Stockton, like most of Teesside has seen a steady increase in the number of micropubs and is well worth an afternoon excursion.

**By Michael Wynne, Festival Organiser & Branch Chairman, with additional reporting by our Musical Director, Robin Sanderson.**





REAL ALE IN SUNDERLAND

**TH**

# THE IVY HOUSE

---

We ♥  
Beer

**PASSIONATE ABOUT CASK ALE**  
**6 X CONSTANTLY CHANGING**  
**HANDPULLS FROM RENOWNED**  
**LOCAL & NATIONAL BREWERS**

---

**10% DISCOUNT ON ALL**  
**CASK FOR CAMRA**  
**MEMBERS**

---

**100% HOMEMADE FOOD SERVED DAILY**

---

**THE IVY HOUSE**  
**WORCESTER TERRACE, SUNDERLAND**  
**SR2 7AW**

**0191 567 33 99**

(NEAR PARK LANE INTERCHANGE)

CHECK OUR FACEBOOK PAGE FOR REGULAR CASK UPDATES



## GOOD BEER GUIDE 2020-

### A review of CAMRA's flagship publication

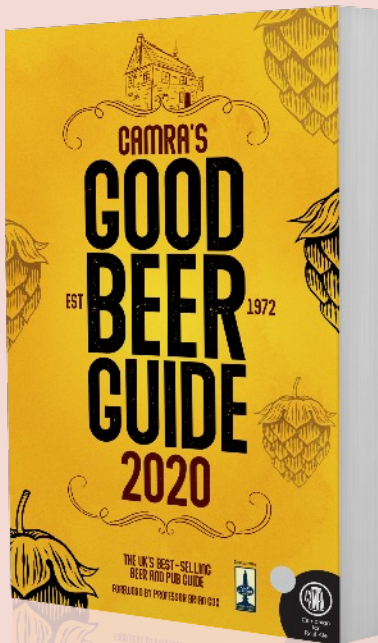
CAMRA have recently published the 47<sup>th</sup> edition of **The Good Beer Guide**. This annual publication contains entries for over 4500 pubs and clubs, and over 1800 breweries in the UK. There is even an entry for a Masonic Centre!

The book is introduced by Professor Brian Cox and contains several articles including the brewing process, CAMRA Beer Festivals, Pub of the Year, beer appreciation and a comprehensive section about beer styles.

Cask Marque sponsor the book and contribute with an article about their role in assessing quality beer and cellarmanship.

There is also an article called "*Long Live The Local*" by former model and racing driver, Jodie Kidd. It's about the real ale pub she owns in Kirdford West Sussex. No one told the local branch however, as the pub doesn't feature in the main listings section.

We often read reports about pub closures. Well, like last year's guide,



there were a sizeable number of brewery closures in the last twelve months – about 120 ; including the much lamented Mordue and George Samuel. In contrast the guide reports that there were nearly 30 new start-ups some of which began production mid-2019 and too late to feature in the full listings section.

There is the ever present index to real ales which covers 36 pages, (the same as last years guide) and a handy index to places is also featured in the book.

Tucked away at the back is an article by CAMRA Director about cask breathers.

In the **Sunderland & South Tyneside** branch there are, as usual, 22 pub entries including two that appear for the first time.

As in previous guides, some pub photographs appear in the guide. In this issue the Dun Cow in Sunderland can be found. Its actually a picture of the Sunderland Empire with the pub in the background.

The Good Beer Guide is a useful tool when visiting other areas and when used in conjunction with Whatpub.com, is invaluable for planning pub crawls and brewery visits.

So, if you don't have a copy already, now is the time of year to drop a few hints with Xmas coming up.

The Good Beer Guide is available from CAMRA Books £15.99 or £13 for CAMRA members.

**Ken Paul**

## REAL ALE IN RYHOPE by Glenda Young

Researching historical novels set around northeast pubs is a tough job but, as the saying goes, someone's got to do it. My novels are set at the end of WW1 in the ex-coal mining and farming village of Ryhope, south of Sunderland city centre.

Ryhope is where I was born and bred, where I grew up and where I still visit family and friends. And anyone who has ever visited Ryhope will have noticed there's a lot of pubs! Well, coal mining and farming was very



thirsty work.

A long line of pubs runs from the top of the old colliery down the bank to the village and around the village green. A handful of them have shut down over the years and either look unlikely to reopen or have been turned into other businesses.

Others, such as The Wheatsheaf – which was next door to the Colliery Inn (now called The Top House) and the village green's Ship Inn and Salutation Inn were demolished decades ago. But there are still plenty of pubs which thrive.

Researching for my novel, *The Paper Mill Girl*, I visited **The Guide Post Inn** for a look around, and a chat with landlord Keith Dewart.

Keith is a happy chap right now. Not only is The Guide Post Inn offering three real ales but the pub has made its way into the **Good Beer Guide** for the first time.

Keith told me: *"It's the biggest achievement since I took over the pub. For a Ryhope lad who's never ran a pub before and only started offering real ales three years ago, to say I'm chuffed is an understatement!"*

And there was more exciting news. Next door to the Guide Post Inn is a small building that was originally built as a

bootmaker's workshop. Keith has plans for the old place and told me that he's planning to start up a microbrewery in there.

*"Hopefully it will be up and running by May 2020,"* he says.



**Then & Now :**  
**Bootmaker John Wilcock with apprentice (above).**  
**From boot making to beer making when Keith's microbrewery opens next year (below).**





Many more Ryhope pubs feature in my novels. In *Belle of the Back Streets*, a girl takes on a rag and bone round to stop her family being thrown on the streets. The action is centred around The Albion Inn on Ryhope village green.

In *The Tuppenny Child*, a girl escapes to Ryhope by train and heads into **The Railway Inn** where her adventure begins. I was lucky enough to find the original floor plans for The Railway Inn at Durham County Records Office when I was researching *The Tuppenny Child*. Like many pubs of the era, it

had stables at the rear and inside included a Snug and a Select. The Select plays an important role in the novel, a place where secrets are revealed!

The story also sees her working in The Forester's Arms. And in *Pearl of Pit Lane* a girl tries to escape a life of working the streets and the story centres on The Colliery Inn.

It's fascinating researching Ryhope and its pubs for my books.

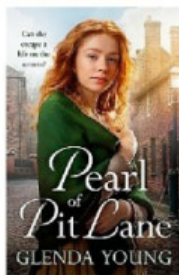
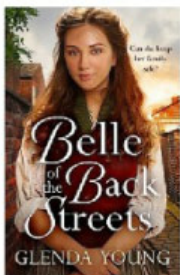


**Above - The Railway Inn circa 1890 and below the Grade II listed building as it is today.**



The two old black and white pictures are courtesy of [Ryhope Heritage Society](#)

## Perfect Christmas Gifts Set in the Northeast in 1919 Glenda Young, local author



**Features Ryhope pubs of the era**  
Published by Headline and available from

**W**  
Waterstones

WHSmith

amazon.com

**Glenda Young**  
**Writer of Historical**  
**Novels set in Ryhope,**  
**1919**

<http://glendayoungbooks.com>

Twitter: @flaming\_nora

For more information about the two real ale pubs mentioned in this article search for Ryhope on Whatpub.com



## HEBBURN - Part 1

Another Sunday afternoon, another wander around some local pubs. This time, the town of Hebburn. A small town rich in history and heritage, which is now thankfully seeing some much needed regeneration. Hebburn is a town on 'the up'. It is also the place of my mam's birth.

I have to admit that my crawl around Hebburn was unfortunately a little disjointed and actually took me three separate crawls. This was due to several reasons; distance, weather, the time I had available and the social life of my son.

So, first on the list was the newly reopened **Dougie's Tavern**. Most recently a Sonnet 43 pub, it has previously been known as the White Lead and the Royal Hotel. I couldn't find much online about the history of the building, but I remember going there twenty years ago with my friends.

A pint of Rivet Catcher, which was the only handpull available, set me back £2.20. Two other handpulls lay empty, which I hope is not a sign of what's to come. I was pleased to see old photos of Jarrow and Hebburn on



the walls. There were plenty of seats, which were very comfortable.

A pool table and dartboard were available and there is a DJ and live music nights. The pub had a community feel, and was busy with people enjoying the nice weather. There is a large play area / beer garden available and three large screen televisions which were showing the gymnastics, with muted sound. The ambience was created by some nice music played over the speakers at just the right volume.

One gripe I did have, and it is a small one, is that the beautiful old fireplace was blocked by an ugly electronic games machine. All in all, a canny pub and I'll definitely return, not least because it is close to a children's soft play where I sometimes take my son.

Next up was The Caledonian, known locally as 'The Cally'. There was no real ale, however, I

liked the place. A pint of Caffrey's put me back £2.90 which I thought was perfectly reasonable. There was a wide selection of other beers and lagers if you were that way inclined.

The pub has three televisions, all were muted, with some music on in the background that wasn't too loud. There was complimentary food on the bar consisting of some old favourites like pickled onions and peanuts.

The Cally ( below) is a 'Pubwatch' member, which I find reassuring. Pubwatch members work closely with local police and any troublemakers are dealt with accordingly, often receiving bans from licensed establishments. There were also several 'stay safe' posters on the walls, warning patrons of the dangers of over



drinking, losing friends on nights out etc. I thought this was a very positive sign, and shows The Cally to be taking its responsibilities seriously.



Sky and BT Sports were available to watch, and I believe the place gets busy when the match is on. A word of warning if you are a Sunderland supporter though... the colours of NUFC were quite clearly displayed on the far wall. You have been warned!

There was a dart board and a pool table, together with a couple of games machines to entertain you. I'm not a big fan of those sorts of things, however, they didn't detract from my enjoyment of being in the pub. The Cally was warm and welcoming, it was clean and tidy, and the staff were friendly. A few regulars were dotted about, enjoying a beer and reading the paper. It had a good atmosphere and everyone seemed to know everyone else... a good sign in a community local.

My one disappointment (other than not having a pint of real ale in my hand!) was that despite the rich history of the town, there were no photographs or other memorabilia celebrating it. A small grumble, which did not detract from my time spent there.

A short walk in the direction of the town centre took me to Wardle's (previously known as 'The Albert

Hotel'). I again settled for a pint of Caffrey's (£2.60) and although there was again no real ale on tap, my drink did come in the correct glass. It's that attention to detail that makes a difference.



Bottles of Fuller's London Pride were available but weren't immediately visible, as they were in the fridge behind the bar.

Wardle's has been a pub since 1905 or 1908 depending on who you ask. Regardless of the correct date though, it has been there a long time. And as per The Cally, despite the rich history of the town and the pub itself, I was not able to find any old photos or memorabilia.

There was a pool table, and games machines, and a large area for a DJ / dance floor. As I visited on an afternoon though, it was quiet with muted televisions and some background music on. There is live music on at weekends and the pub has a social media presence on Facebook. There was a sign suggesting that only guide dogs were allowed, which

was situated right next to another sign stating that dogs were allowed but only until a certain time. So if you want to take your chances by taking your dog with you, then good luck!

The bar stools were probably the most comfortable bar stools I have ever sat on. And a massive bonus point here, there were coat hooks on the bar. I always look for coat hooks and foot rests at bars. Alas they are seldom found these days, so when I find them I make the most of them. Simple things indeed.

To start at Dougie's Tavern, one is advised to get the Metro to Jarrow and walk down to Western Road and onto Blackett Street. From Dougie's head towards Hebburn Town Centre via Wagonway Road to find The Cally. Wardle's is just around the corner, and a short walk from there takes you onto Argyle Street and onto Hebburn Metro. From start to finish is approx. 2 miles on paths, with no inclines.

To be continued; Hebburn has a lot more to offer and the second part should be in the next edition of Camra Angle.

***The Wandering Bear***



# THE STEPS

**Real Ale, Real Pub, Real People.**



**5 CHANGING REAL ALES -  
WE ARE IN THE 2020 GOOD  
BEER GUIDE.**

**QUIZ NIGHTS : TUESDAY  
& THURSDAY (MUSIC) AT  
9 PM WITH FREE HOT  
SUPPER.  
SKY SPORTS. LIVE  
ENTERTAINMENT LAST  
SATURDAY OF THE MONTH  
Functions catered for.**

**Open : Mon-Fri 3.30pm-11pm, Sat Noon-11pm, Sun Noon-10.30pm**

**[the.steps@btconnect.com](mailto:the.steps@btconnect.com) 0191 4150733.**

**47 Spout Lane, 2 minutes walk from Washington  
Washington, NE38 7HP. Village Green**

## The Biddick Inn Washington



**REAL ALE AVAILABLE**

**QUIZ NIGHT :  
Monday  
KARAOKE NIGHTS:  
Friday & Saturday**

**Functions catered for.**

**Beer Garden with BBQ  
and children's playground**

**Open daily 11am - midnight. Food served noon - 8pm ( Sun 4pm)**

**Bonemill Lane  
Washington, NE38 8AJ.  
Tel - 0191 4195101**

**Near the banks of the River Wear and  
Fatfield Bridge - bus stops outside.**



## Members Matter - 2

### A word from our Membership Secretary

It's a fact, but wherever I go, I always try and seek out a copy of the CAMRA magazine from whichever branch is responsible for producing it, and you can usually find one at the end of the bar or near to the hand pulls!

I'm sure I'm not the only CAMRA member to do this but I guess there are lots of people reading this particular magazine for the first time, in the pub where they found it in, or at home enjoying a cup of coffee and a biscuit! If you enjoy real ale or cider, or you are thinking about trying some, join our ever increasing numbers and you'll be made very welcome.

Even though I say so myself, I reckon our group contains some of the



nicest, friendliest people you'd wish to meet, and it's a great way to make new friends.

Our committee organize branch meetings each month, as well as social events, visits and a brilliant beer festival every October. We always need new members and extra help, and if you've found this magazine then the membership forms won't be far away or you can join on-line.

I've only taken over the mantle of **Membership**

**Secretary** earlier this year and my initial aim was to ensure that every pub, club or hotel in our area who sell real ale and their customers of course, have access to us and the availability to join in. If you've read this article then it must be working!

With many places offering discounts on beer for being a member of CAMRA and with £30 worth of vouchers to be had on joining, which can be spent in a lot of different places, your £26.50 membership fee looks like an absolute bargain. See you at the next branch meeting?

See inside back page for information on how to join.

**Peter Tong**

### A note From Dave Craggs

I was lucky enough, more by good luck than judgement, to be in York for this years' beer festival. I was even luckier to get a pass out from my good wife, so the dog and I walked to the York racecourse. We were pleasantly surprised to have a choice of 400 beers and 100 ciders.

Now I've never been to the GBBF, in London, as I feel it's a long way to go for a few pints. Which had me thinking, why not have the GBBF every other year in London, and then alternately in England, Northern Ireland, Scotland and Wales? A Regional GBBF might not be as big as one held in London, but it would give a Regional boost. Any thoughts?

Contact me, Dave Craggs, using the form in the on line CAMRA Angle, #pubpreservation.



This is a list of branch pubs that participate in the **CAMRA Members Voucher Scheme** or offer discounts and loyalty cards.

<b>The Avenue, Sunderland</b> - 20p off a pint	<b>Grey Horse, East Boldon</b> - 50p off CVS & loyalty card.
<b>Bamburgh, South Shields</b> - 10% discount	<b>Guide Post, Ryhope</b> - 20p off a pint & loyalty card
<b>Blue Bell, Fulwell</b> - 50p off CVS & loyalty card.	<b>Harbour View, Roker</b> - 10% off Mon - Fri up to 7pm
<b>Board Inn, E Herrington</b> - 50p off CVS	<b>Ivy House, Sunderland</b> - 10% discount
<b>Cask Lounge, South Shields</b> - 15% disc.	<b>Maltings, South Shields</b> - 10% discount
<b>Central, Sunderland</b> - loyalty card.	<b>Marine, South Shields</b> - loyalty card
<b>Chaplins, Sunderland</b> - 10% discount on real ale & food also loyalty card.	<b>New Derby, Roker</b> - 10% disc. & loyalty card
<b>Chesters, Sunderland</b> - 50p off CVS & loyalty card.	<b>Peacock, Sunderland</b> - 10% discount -
<b>Cooper Rose, Sunderland</b> - 50p off CVS	<b>Pier, South Shields</b> - 10% discount <b>NEW!</b>
<b>Criterion, South Shields</b> - 10% discount <b>NEW!</b>	<b>Ship Isis, Sunderland</b> - 20p off a pint
<b>Dougie's Tavern, Jarrow</b> - 10% discount <b>NEW!</b>	<b>Sir William de Wessington, Washington</b> - 50p off CVS
<b>Dun Cow, Sunderland</b> - 10% discount	<b>Washington Arms, Washington</b> - 50p off CVS.
<b>Engine Room, Sunderland</b> - 10% discount	<b>Wild Boar, Houghton</b> - 50p off CVS
<b>Fitzgeralds, Sunderland</b> - Loyalty Card	<b>William Jameson, Sunderland</b> - 50p off CVS.
<b>Fountain, South Shields</b> - 10% discount	<b>Wouldhave, South Shields</b> - 50p off CVS. <b>Currently closed due to refurbishment.</b>

**CAMRA LocAle** is an initiative that promotes pubs & clubs stocking locally brewed real ale. Below is a list of those in our branch that sell beer brewed in Northumberland, Tyne & Wear and County Durham. If you have any updates please email the branch Pubs Officer, [sst.pubsofficer@gmail.com](mailto:sst.pubsofficer@gmail.com).

<b>East Boldon</b>	<b>Ryhope</b>	<b>Sunderland (contd)</b>
Boldon Cricket Club	Guide Post	Dun Cow
Mid Boldon Club	<b>South Shields</b>	Fitzgeralds
<b>East Rainton</b>	Cask Lounge	Ivy House
Highfield Hotel	Criterion	Kings Arms
<b>Fulwell, Seaburn &amp; Roker</b>	Maltings	
Avenue	Marine	Museum Vaults
Blue Bell	Steamboat	Ship Isis
Grannie Annies	<b>Sunderland</b>	<b>Washington</b>
Poetic License	Central	Courtyard
	Chesters	Sir William de Wessington

## WILD WEST END by TERRY FORD

A trip to see my cousin allowed me a bit of time to see some of The Smoke's Historic Pubs Interiors.



First off was **The Angel** in Covent Garden. A pub has been on this site since the 16 Century and this current pub dates from 1898. This Regionally Important Historic Interior is owned by Sam Smiths.

The pub is split into three drinking areas the left and middle bar are covered in gorgeous wooden panelling (below), the right hand side is a former carriage entrance and is now covered in green tiles.



The only real ale on was Old Brewery Bitter. Given

that this pub is over 120 years old the condition was absolutely fabulous. The pub was quiet but the clientele includes musicians, art students, tourists and bell ringers!

Next on the list was the **Coach and Horses** in Soho. First licensed in 1724 it was rebuilt in



1899 but has a 1930's interior. It advertises itself as "Normans, The West End's Best Known Pub!" Norman is a former landlord who advertised himself as "London's rudest landlord," well it is the West End!

This is a Grade II listed building and a historic pub interior of regional importance. The outside red and cream columns are stunning ( see above).

Inside there are three bar areas each with original 1930's wall panelling.

On my visit there was a large group of toffs dressed in 1920's and 30's clothing costing more

than my house. They dressed like they were straight out of a Noel Coward play (they might well have been!) and looked fabulous and really added period atmosphere to the pub.

There was only one real ale on as the landlord was having a bitter dispute with the brewery (Fullers).

The bar area was surrounded by trough spittoons, this Geordie peasant was tempted to gob into them but I thought better of it as the place used to be a Private Eye hangout crawling with Special Branch!



The Dog & Duck ( below)



(continued opposite).



## SPBW NEWS by Michael Wynne

### The North East Branch of the Society for the Preservation of Beers from the Wood (SPBW)

was formed in 2014 and we held our fifth annual general meeting at Tynemouth Social Club (right) in September. We try to ensure that there is a beer served from a wooden cask at our meetings. The club regularly sells beer from the wood and on this day, we had Hadrian Border Ouseburn Porter.

There are an increasing number of breweries in the North East that own wooden casks; the Society also owns several casks that we loan to pubs and breweries who are interested in giving it a try. At the recent Durham CAMRA festival, there were a total of nine beers served from the wood, this included Darwin and Maxim. Darwin have since supplied New Fang in the wood to Heaton Tap in Newcastle.



October's meeting was held in the Marine in South Shields and again we had Hadrian Border Ouseburn Porter. Thanks to Alex for hosting the meeting and providing us with an excellent buffet. At that meeting, it was announced that Cullercoats Crescent Club had been voted Pub/Club of the Season for summer.

There was a festival of beer from the wood at Darlington Snooker Club in November and that month's meeting was held at Haltwhistle Comrades Club on the same day as the CAMRA presentation for the North East Club of the

Year. December's meeting will be on the 14<sup>th</sup> at Darlington Snooker Club followed by a pub wander around Darlington

**The SPBW was founded in 1963** so is the senior beer consumers organisation and is quite different from CAMRA in its organisation and aims. The network of 24 branches are autonomous and branch members are automatically affiliated to the national organisation.

The North East branch covers the area from the Tweed to the Tees and is principally a social organisation arranging pub and brewery visits. Although there are formal meetings, the organisational stuff is kept to a minimum. New members who share the aims of the Society are always welcome. For information about national membership, visit [www.spbw.beer](http://www.spbw.beer).

### Wild West End Contd.

Third was **The Dog and Duck** also in Soho with a historic pub interior of national importance. Owned by Nicholson's this 1734 pub was rebuilt in 1897 and frequented by artists like John Constable, George Orwell, Madonna

and P\*\*\* artists like myself.

The walls are covered in tiles and a mosaic of animals in hunting scenes and there are many original light fittings. George Orwell photos adorn the wall and he was rumoured to have celebrated when Animal

Farm was chosen by the American Book of the Month Club by drinking some 135 degree proof absinth!

I'm guessing his South Shields born wife Eileen O'Shaugnessy was not invited!



## PUB QUIZ

- 1 What is Homer Simpson' s favourite drink?
- 2 Who had a hit single in 1983 with Drop The Pilot?
- 3 Nuuk is the capital of which autonomous region, part of Denmark?
- 4 Who said in 1987 - " Mr Gorbachev, tear down this wall "?
- 5 The liquid part of blood is called what?
- 6 Wincanton racecourse is in which county?
- 7 Gerontology is the scientific study of what ?
- 8 Name the ceremonial dance performed by the New Zealand All Blacks.
- 9 Which is the only Abba hit single to reach number 1 in the USA?
- 10 In cycling, what is a derny
- 11 Northern Lights, The Subtle Knife and The Amber Spyglass comprise which Philip Pullman fantasy novels?
- 12 Which TV Quiz show includes the Twisted Flax, Two Reeds, Horned Viper and the Eye of Horus?
- 13 Who wrote the sci-fi novel Dune?
- 14 Name the brand of the Boston Beer Company that is named after one the USA founding fathers.
- 15 Which Billingham born actor played Elton John's songwriting partner in the film Rocketman?
- 16 Who brews Red Dust, White Hot and Black Bob?
- 17 Who wrote the novel The Clockwork Orange?
- 18 In which N Yorks town would you find Brass Castle & Bad Seed Breweries?
- 19 Which island nation is served by Changi Airport?
- 20 Name these three pubs.

ANSWERS ON NEXT PAGE





## WEIRD, WONDROUS & HISTORIC PUBS OF THE UNITED KINGDOM

MIKEY G. SWANN



I have always been a curious learner of historical Britain and as I grew older, my passion grew towards our pubs. I started doing my research roughly 10 years ago into the most weird, wondrous and historic public houses in the United Kingdom. I was fascinated by their origins, the stories they carry and what makes them stand out from the

rest and I wanted to share my discoveries with others.

Inside, you will read about hidden away gems, each with their own unique story to tell, such as a pub that is four feet lower on one side than the other, the highest inn in the country and the public house where the discovery of DNA was first announced. The book features local pub The Marsden Grotto. I have a great foreword at the beginning of the book written by one of the co-founders of Wold Top Brewery and Spirit of Yorkshire Distillery and here's what he had to say

*"As brewers, pubs are our bread and butter; likewise the communities that they serve. And just as every community has its quirks and own*

*characteristics, so do the pubs! The expression "wouldn't it be boring if we were all the same" is very apt here. What makes Britain's culture of public houses so unique is the individuality of those public houses and it's wonderful to have a book that celebrates this.*

*Everyone likes a story and a snippet of information which they can pass on to their friends and the varied examples here are a great excuse to call in and sample the atmosphere that our pub heritage has in abundance. Should be kept in the car for reference!"*

Weird, Wondrous & Historic Pubs of the United Kingdom is available to buy on Amazon in either Paperback or Kindle format.

## Quiz Answers

1	Duff Beer	11	His Dark Materials
2	Joan Armatrading	12	Only Connect
3	Greenland	13	Frank Herbert
4	US President Ronald Reagan	14	Samuel Adams
5	Plasma	15	Jamie Bell
6	Somerset	16	Consett Aleworks
7	Old age	17	Anthony Burgess
8	The Haka	18	Malton
9	Dancing Queen	19	Singapore
10	Electric bike used to start the Keirin in cycling	20	Top - Marine; Left - Chesters, Right- Stags Head

# Join up, join in, join the campaign

From  
as little as  
**£26.50\***  
a year. That's less  
than a pint a  
month!

Includes  
**£30**  
Real Ale  
Cider & Perry  
Vouchers

Discover  
why we joined.  
[camra.org.uk/  
10reasons](http://camra.org.uk/10reasons)

**Join us, and together we can protect the traditions of great British pubs and everything that goes with them.**

Become part of the CAMRA community today - enjoy discounted entry to beer festivals and exclusive member offers. Learn about brewing and beer and join like-minded people supporting our campaigns to save pubs, clubs, your pint and more.

Join the campaign today at  
**[www.camra.org.uk/joinup](http://www.camra.org.uk/joinup)**

\*Price for paying by Direct Debit and correct at April 2019. Concessionary rates available. Please visit [camra.org.uk/membership-rates](http://camra.org.uk/membership-rates)



Campaign  
for  
Real Ale



# It's the most wonderful time for a beer...



Give your beer or pub lover a whole year's worth of enjoyment with CAMRA membership

Visit [camra.org.uk/gift-membership](http://camra.org.uk/gift-membership)

**Membership includes:** £30 Real Ale vouchers • Discounts on pints at over 3,500 pubs nationwide • Exclusive monthly *What's Brewing* newspaper and quarterly *BEER* magazine • Special offers on over 180 beer festivals • Beer and brewing learning resources • Discounts in the CAMRA Shop

<sup>1</sup>For full T&Cs please visit the website for more details.



Campaign  
for  
Real Ale